

BANGKOK REPORT
JULY 2010

BANGKOK REPORT

JULY 2010

CONTENTS

- **Infinity Samui** – resort (Thailand)
- **The Estates Samui** – resort (Thailand)
 - **Breguet** – store (Hong Kong)
- **BioLab of Center for Disease Control** – architecture (Taiwan)

Infinity Samui

Project Overview

A low-rise luxury development, on the tropical island of Koh Samui island, comprising of 67 apartments with 1-7 bedrooms. All units have access to a swimming pool and command panoramic sea views. The project will be operated by InVision Hospitality as a 5-star boutique hotel offering full facilities and services such as Beach Club, wellness spa, fitness, squash courts, room service, housekeeping etc. Infinity Samui has won several awards, such as “Best Condo Development” at the Thailand Property Award 2009 and “Best Development Thailand” at the Asia Pacific Property Awards 2010 in association with Bloomberg Television.

Project Details

1. **Type of Business:** *Luxury apartments, condominiums and penthouses*
2. **Open Date:** *May 1, 2010.*
3. **Location:** *Ban Pao area, Koh Samui island, Thailand*
4. **Target Customer:** *Buyers seeking a holiday home or an investment property*
5. **Concept:** *Tranquil environment inspired by nature*
6. **Size of development:** *16,000 square meters*
7. **Price range:** *18,120,000 - 67,800,000 Thai baht*
8. **Architect:** *Julie Peeters*
9. **Interior design:** *Kurt Wallaey*
10. **Developer:** *Vertuz Development*
11. **Hotel operator:** *InVision Hospitality*
12. **Website:** www.infinitysamui.com

BANGKOK REPORT
JULY 2010

Location Map



The popular island of Koh Samui on the Gulf of Thailand. In recent years the island has transformed from a backpacker's paradise to a high-end holiday destination.



Ban Pao is located on the quieter north-west side of the island.

BANGKOK REPORT
JULY 2010



Aiming at creating an ultimate resort style living, Infinity Samui is a gated low-rise luxury development, on the hillside with access to the private beach.



Phase 1 of Infinity, situated at the hilliest site of the project, contains 28 apartments and 6 penthouses. Some apartments enjoy the privilege of an exclusive private pool while others have access to a public pool of 1,400 sqm.

BANGKOK REPORT
JULY 2010



Thanks to its ideal setting within the landscape, an uninterrupted sea view can be enjoyed by all whilst maintaining individual privacy.



BANGKOK REPORT
JULY 2010



BANGKOK REPORT
JULY 2010



BANGKOK REPORT
JULY 2010



BANGKOK REPORT
JULY 2010



BANGKOK REPORT
JULY 2010



The living room area, designed in a modern, minimalist style.



BANGKOK REPORT
JULY 2010



Bright and spacious interiors, leading onto wide open terraces with private pools.



BANGKOK REPORT
JULY 2010



Kitchen area.



The bedroom.

BANGKOK REPORT
JULY 2010



The bedroom.



The bathroom.

BANGKOK REPORT
JULY 2010



Spacious terraces with panoramic ocean views.



The Estates Samui

Project Overview

A private collection of 14 villas situated on Laem Yai bay on the island of Samui, in a secluded cove above a private beach, adjacent to the Four Seasons Resort Koh Samui. Each villa is exceptionally private, set amidst lush coconut groves. Like Infinity Samui, The Estates Samui won accolades at the Asia Pacific Property Awards 2010 in association with Bloomberg Television for “Best Development Thailand” and “Best Development Asia Pacific”. The development also won an Asia Pacific Residential Property Award 2009 from International Property Awards.

Project Details

1. **Type of Business:** Branded private villas
2. **Open Date:** Q3, 2010
3. **Location:** Laem Yai Beach, Koh Samui island, Thailand
4. **Target Customer:** Buyers seeking a holiday home or an investment property
5. **Concept:** Luxury island lifestyle
6. **Size of land area:** Appr. 40,000 square meters
7. **Unit sizes:** 912 – 1,200 square meters
8. **Price range:** Starting from 170,000 Thai baht per square meter
9. **Designer::** Bill Bensley
10. **Developer:** Samui Beach Residences, wholly owned by Minor International
11. **Website:** www.theestates-samui.com

BANGKOK REPORT
JULY 2010

Location Map



Above and below: The property development is nestled amongst the lush secluded hillside of stunning Laem Yai Bay on the northwestern tip of Samui island, just 30 minutes from Samui Airport.



BANGKOK REPORT
JULY 2010



Villas command magnificent sea views and of the surrounding nature.

BANGKOK REPORT
JULY 2010



Architecturally inspired by the concept of traditional Southern Thai style and modern convenience, the homes incorporate a sunken dining pavilion, a separate and spacious living villa, state-of-the-art entertainment and home-management technology, and even a private housekeeper.

BANGKOK REPORT
JULY 2010



Villas have been designed in harmony with its tropical surroundings.



Each of the Bill Bensley-designed residences is outfitted with private infinity pools and outdoor living spaces.

BANGKOK REPORT
JULY 2010



Furniture and interior have been crafted from tropical hardwoods fusing traditional Southern Thai style with modern luxury.

BANGKOK REPORT
JULY 2010



Bedroom. The high ceilings are typical of southern Thai style.

BANGKOK REPORT
JULY 2010



View from dining/living room.

Breguet store (Hong Kong)

Project Overview

Breguet's first boutique in Hong Kong, located at 1881 Heritage in Tsim Sha Tsui. 1881 Heritage is a 128 year-old historical development which has been transformed into a new cultural and shopping landmark. The new boutique is spread over two floors with a VIP room and exhibition space on the 2nd floor. The interior design is inspired by Breguet's antique pocket watch and Reine de Naples wrist-watch.

Project Details

1. **Type of Business:** Watch store
2. **Open Date:** March 2010
3. **Location:** 1881 Heritage in Tsim Sha Tsui, Canton Road, Kowloon, Hong Kong.
4. **Concept:** Exclusive watch boutique
5. **Size:** 300 square meters
6. **Merchandising:** Breguet watches and jewelry
7. **Website:** www.breguet.com

Location Map

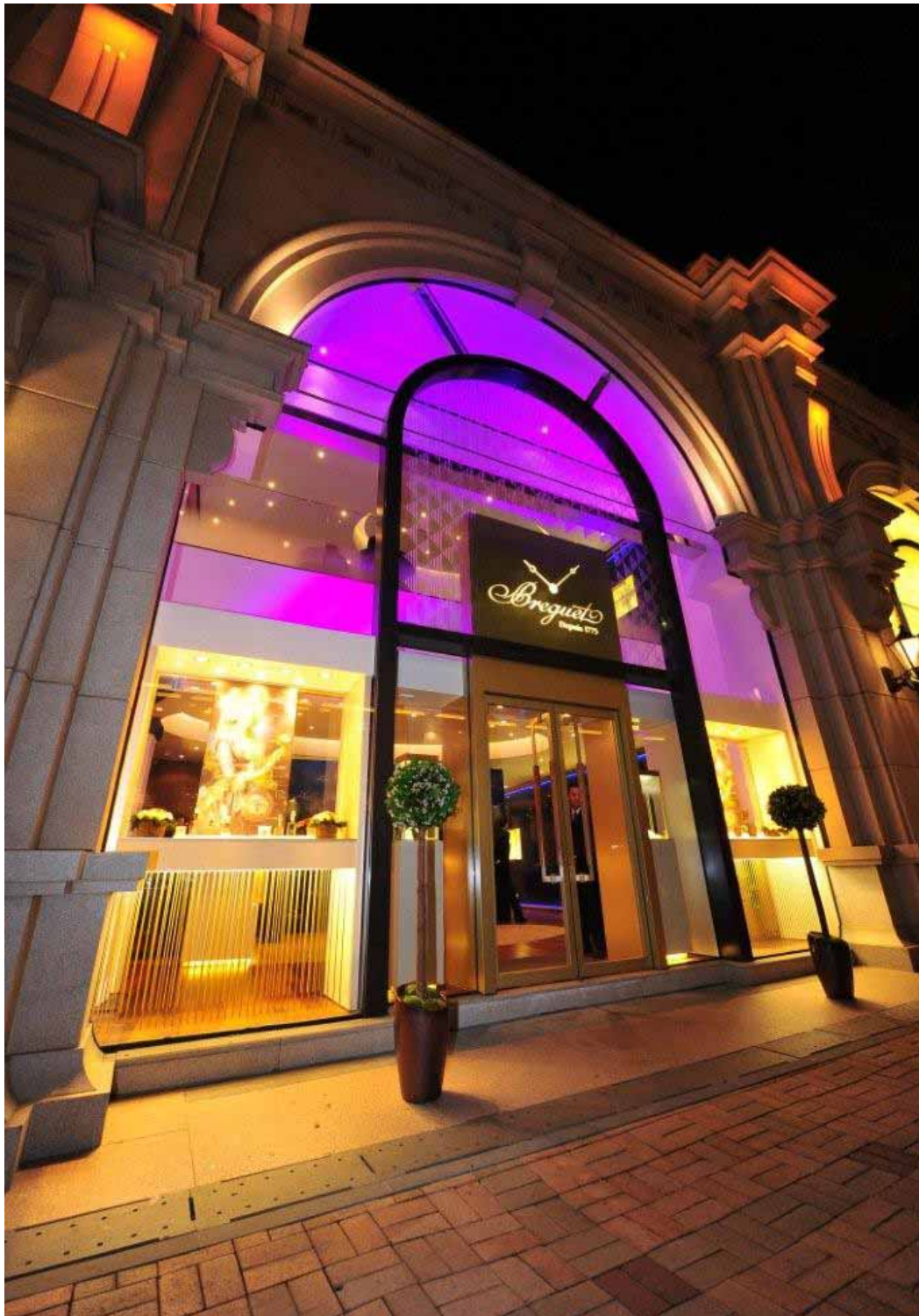


BANGKOK REPORT
JULY 2010



Cultural and shopping landmark “1881 Heritage” is located in the former Marine Police Headquarters.

BANGKOK REPORT
JULY 2010



The elegant entrance to the Breguet boutique. The store represents Breguet's first standalone store in Hong Kong.

BANGKOK REPORT
JULY 2010



The shop itself spans 300 sqm and is spread over two floors. The blue glass inserts in the front windows are inspired by Breguet's antique pocket watch enamel dial color.

BANGKOK REPORT
JULY 2010



To commemorate the opening, an exhibition was held to showcase the famous Marie-Antoinette grand complicated pocket watch and antique timepieces owned by Tsar Alexander of Russia, Empress Bonaparte and other French royalty.

BANGKOK REPORT
JULY 2010



Second floor of the Breguet store.

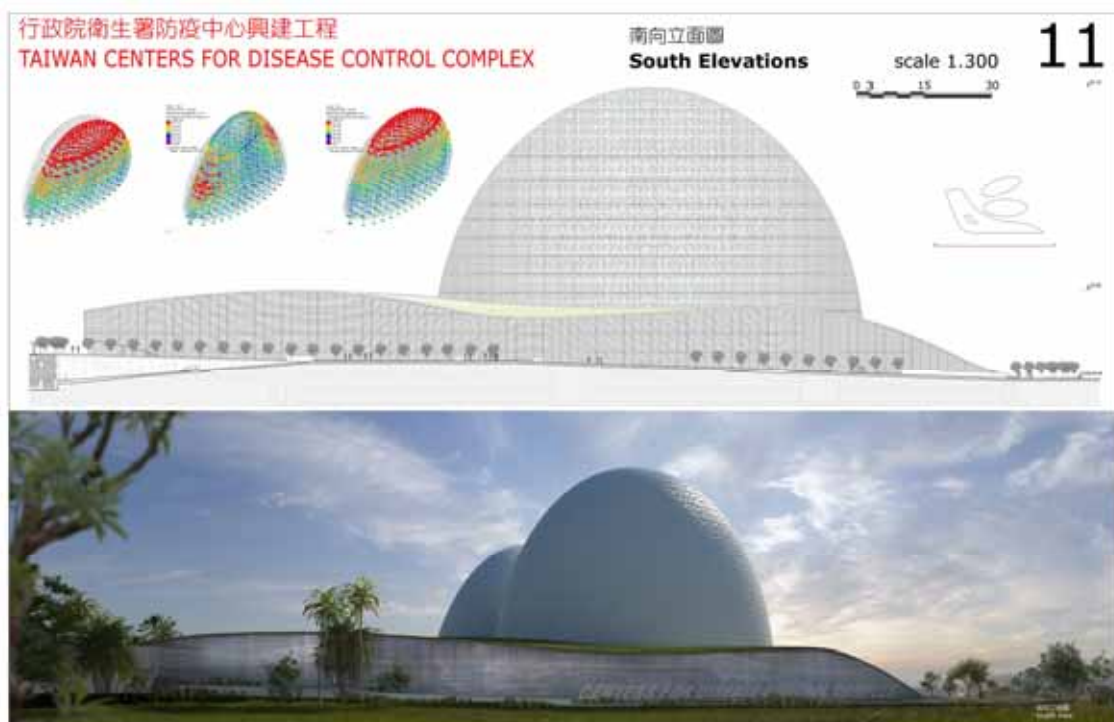
BioLab of Center for Disease Control (Taiwan)

Project Overview

The 'Biolab Squadron' is inspired by the form of the nautilus shell. Its outer skin is laced with geometric patterns representing the four symbols of the DNA sequence of the dangerous bacteria being studied within. The internal layout of the three-story Administration Center recalls the geometry of micro-organisms cultivation visible under a microscope. It's conceived like an 'artificial hill', covered and protected by a green cloak with different kinds of vegetation to provide insulation and make it blend in with the landscape. The design was part of a worldwide competition that invited new designs for the creation of the lab.

Project Details

1. **Type of Venue:** Science laboratory
2. **Location:** Taipei, Taiwan
3. **Concept:** Inspired by biology
4. **Designer:** Manfredi and Luca Nicoletti from Studio Nicoletti Associati (Rome)



BANGKOK REPORT
JULY 2010

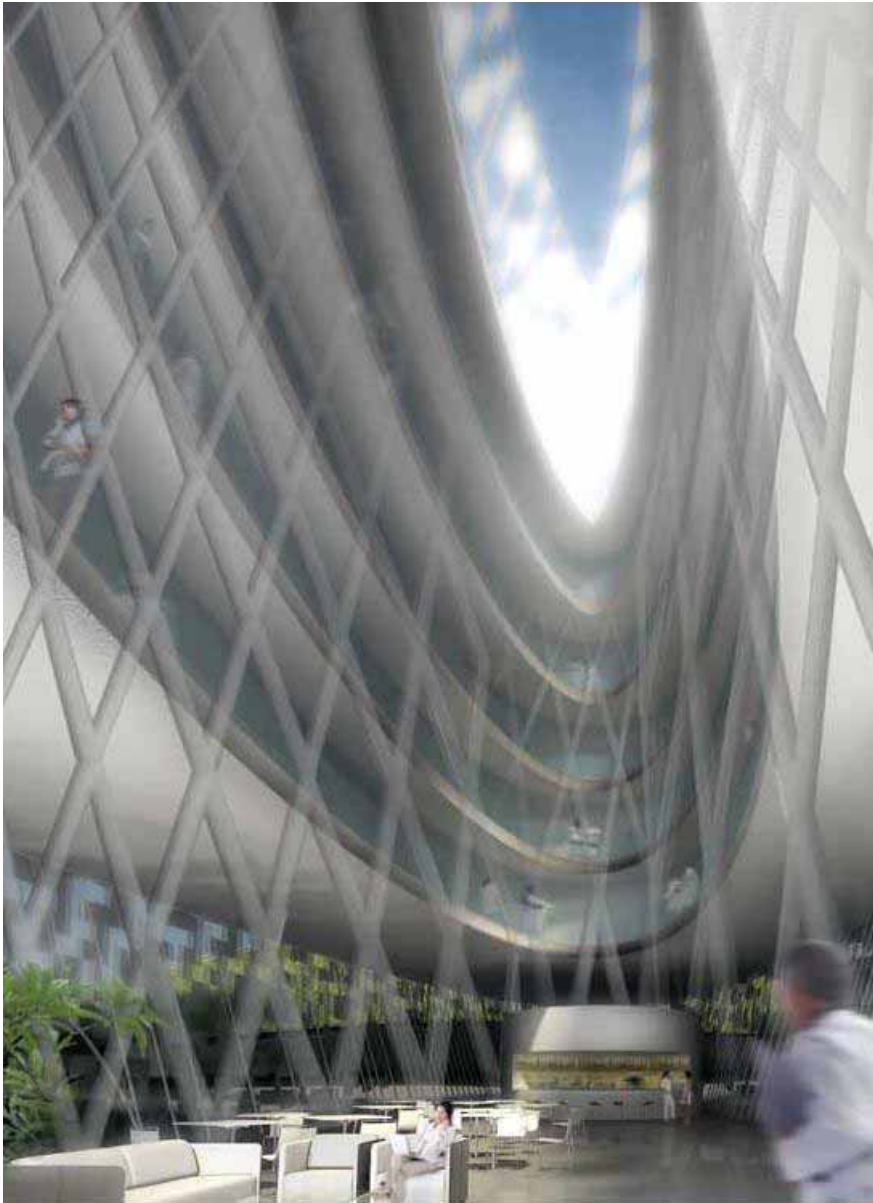


Above and below: External views of the 2 outer shells.



The two shells form the Biolab Squadron. The outer skin pattern is made of interlacing geometric incisions reproducing the four conventional symbols attributed to the DNA sequence of the bacteria being studied.

BANGKOK REPORT
JULY 2010



Above and below: The internal layout of the three-story Administration Center recalls the geometry of a micro-organisms cultivation visible under a microscope.

BANGKOK REPORT
JULY 2010



BANGKOK REPORT
JULY 2010



The three-story 'C' shaped Administration Center is conceived like an 'artificial hill' covered and protected by a green cloak with different kinds of grass and bushes which provide a perfect insulation and blending with the landscape.