

BANGKOK REPORT  
FEBRUARY 2011

## BANGKOK REPORT (Part II)

### FEBRUARY 2011

#### CONTENTS

- **Hôtel de la Paix** – Hotel (Siem Reap, Cambodia)
- **Le Méridien Hotel** – Hotel (Taipei, Taiwan)

## Hôtel de la Paix

### **Project Overview**

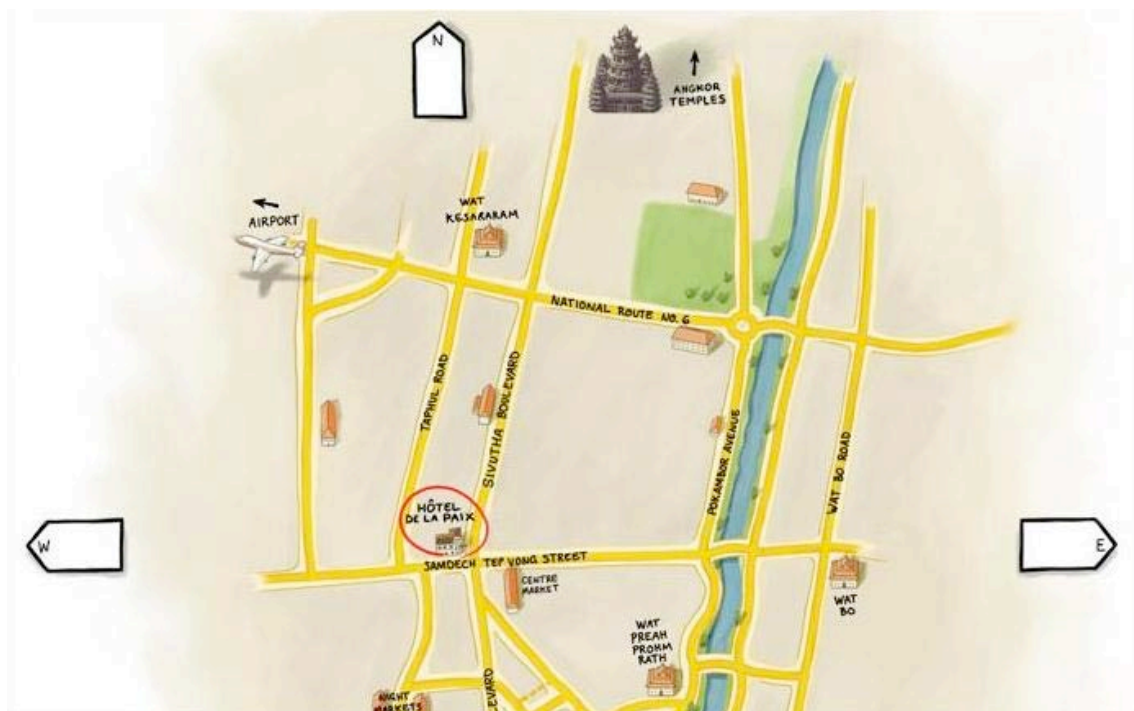
The original Hôtel de la Paix opened in 1957, and as the name suggests, was French owned and operated. It set a new international standard and led the way as one of the finest hotels in Siem Reap. However, the next 40 years was a time of great turmoil in Cambodia and the hotel changed hands many times. The early 2000's with democratic elections marked a brighter era and a new beginning for Hôtel de la Paix. New owners asked world famous architect Bill Bensley to design the new hotel. It was completed in 2005, and is as you see today, a fusion of ancient Khmer design blended with art deco.

### **Project Details**

1. **Type of Business:** *Boutique hotel*
2. **Open Date:** 2005
3. **Concept:** *Ancient Khmer design mixed with art deco.*
4. **Location:** *Angkor Wat, Siem Reap, Cambodia*
5. **Number of Rooms:** *107 rooms and suites.*
6. **Room Rate:** *Starting at US\$ 300 per night.*
7. **Size:** *11,150 sqm*
8. **Target customer:** *Leisure travelers.*
9. **Developer:** *Bed Management (they are the founders of Bed Supper Club in Bangkok)*
10. **Architect & Interior design:** *Bill Bensley; [www.bensley.com](http://www.bensley.com)*
11. **Website:** [www.hoteldelapaixangkor.com](http://www.hoteldelapaixangkor.com)

BANGKOK REPORT  
FEBUARY 2011

**Location Map**



*Hôtel de la Paix is located near the ancient temples of Angkor Wat in Siem Reap, Cambodia.*

BANGKOK REPORT  
FEBUARY 2011



*Entrance to the hotel.*





BANGKOK REPORT  
FEBUARY 2011



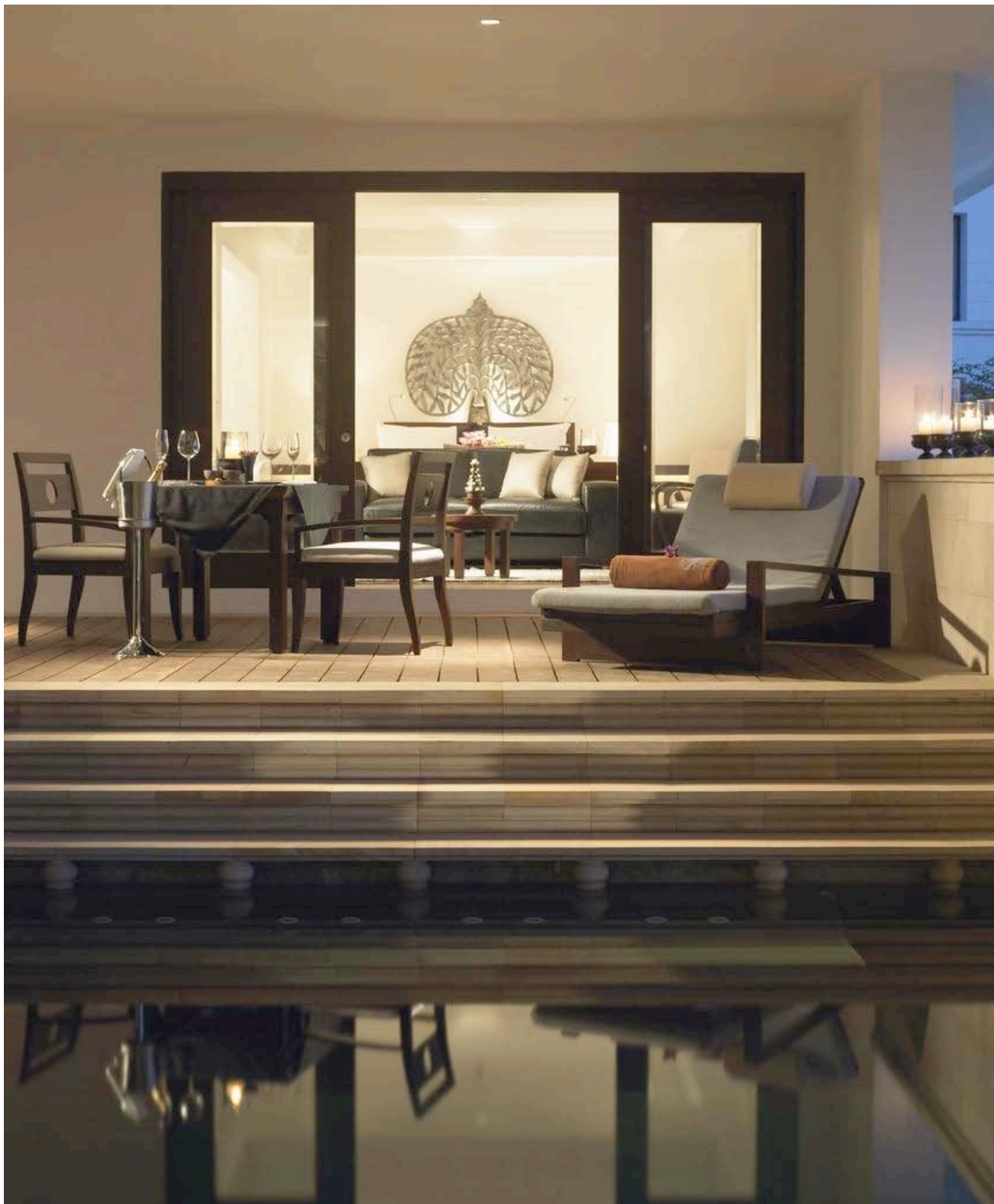
*The Artist's Lounge.*

BANGKOK REPORT  
FEBUARY 2011



*The lounge is a showcase for emerging artists.*

BANGKOK REPORT  
FEBUARY 2011





BANGKOK REPORT  
FEBUARY 2011





BANGKOK REPORT  
FEBUARY 2011



*Fire Garden Courtyard adjacent to Meric Restaurant.*



BANGKOK REPORT  
FEBUARY 2011



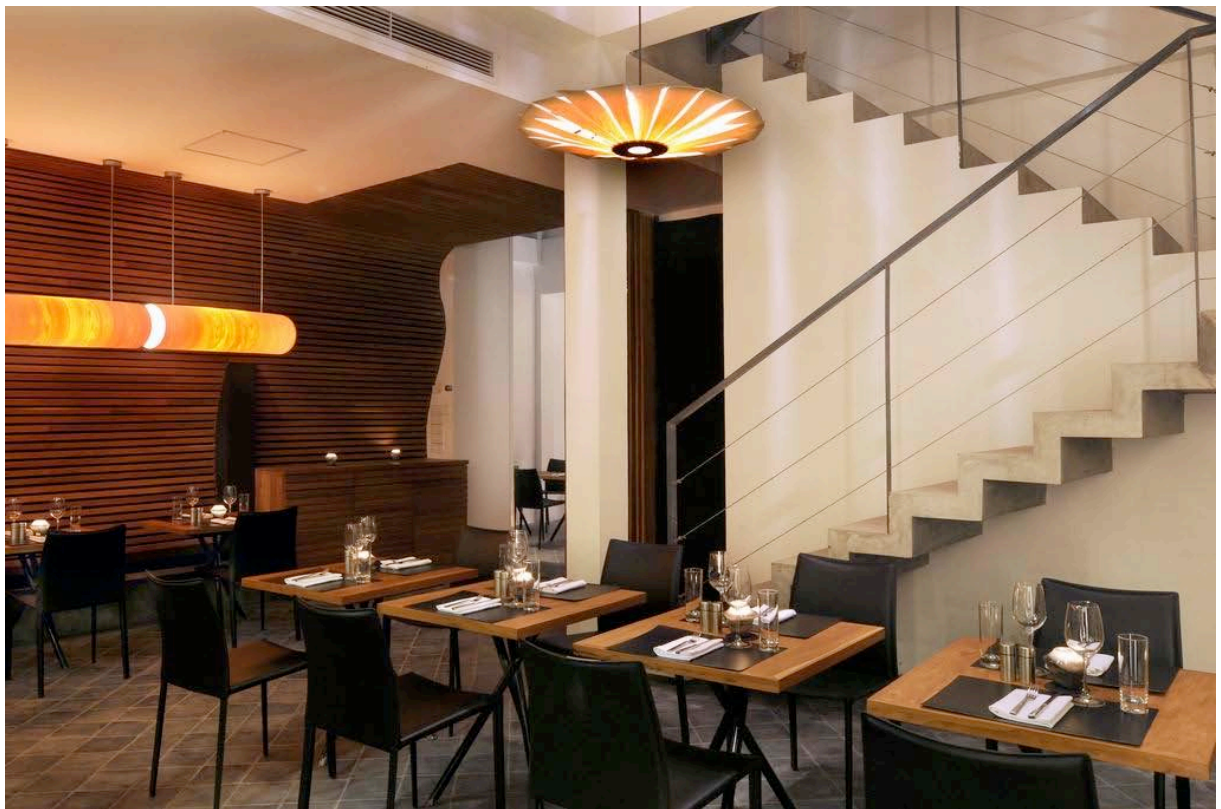
*Café de La Paix.*



BANGKOK REPORT  
FEBUARY 2011

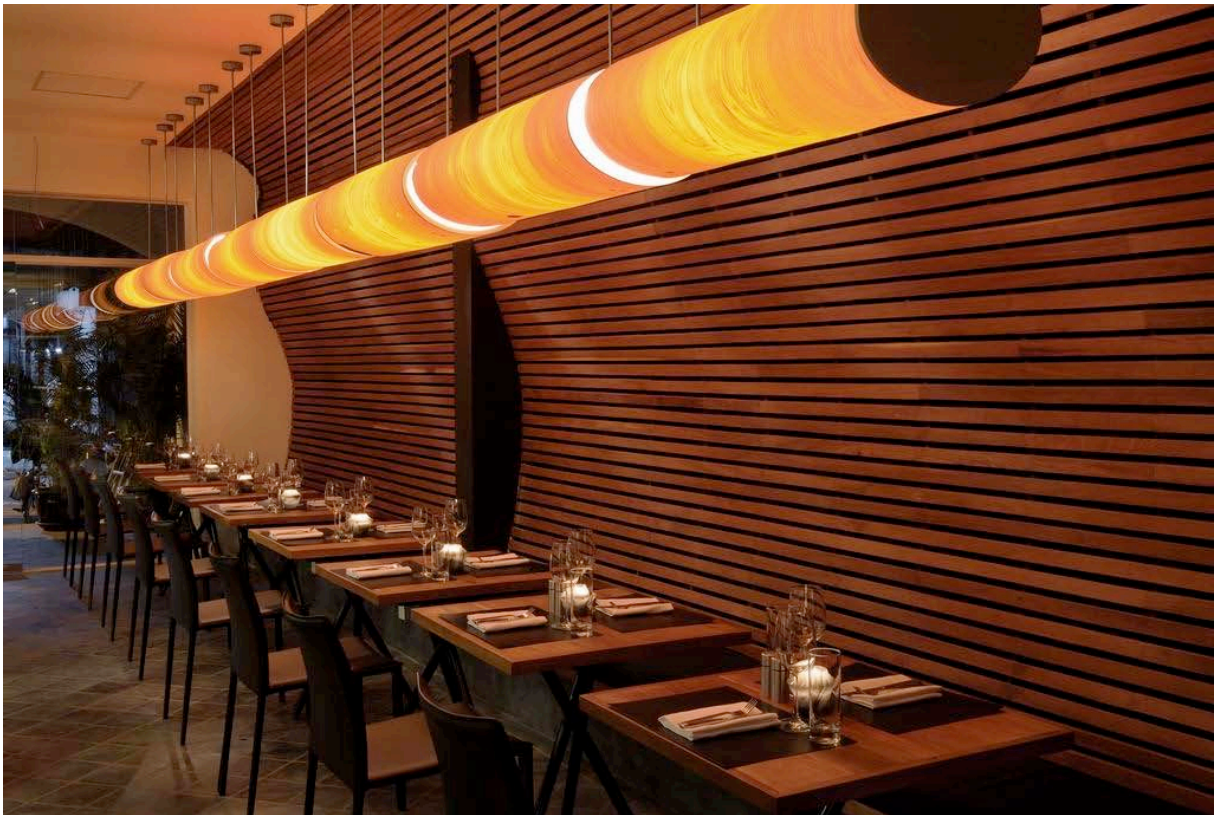


*AHA Restaurant.*

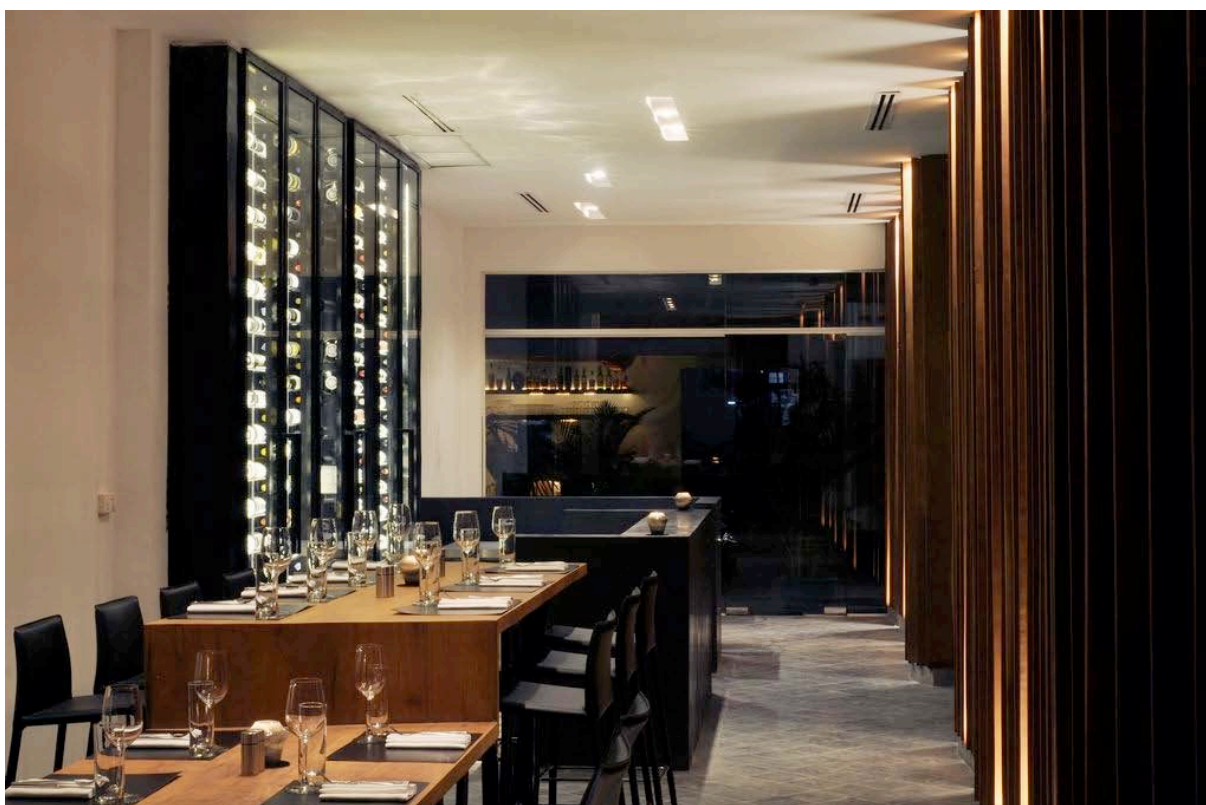




BANGKOK REPORT  
FEBUARY 2011



BANGKOK REPORT  
FEBUARY 2011





## Le Méridien Hotel

### **Project Overview**

The Starwood Group recently opened its first Le Méridien property in Taiwan in the Xinyi District, the most cosmopolitan area of Taipei. The new property's design approach is understated and timeless, featuring more than 700 original artworks created exclusively for the hotel by contemporary artists from around the world, imbuing the space with a sense of culture and art.

In terms of F&B, the hotel has two new restaurant concepts "Humble House" and "Latest Recipe", an innovative coffee and chocolate café "ChocoArt", the chic lobby lounge bar "Latitude 25" and destination Bar "Quube". The property also offers 1,700 square meters of contemporary meeting and function space.

### **Project Details**

1. **Type of Business:** *Luxury hotel*
2. **Open Date:** *December 2010*
3. **Concept:** *Art hotel*
4. **Location:** *Xinyi District, Taipei, Taiwan*
5. **Number of Hotel Rooms:** *160 rooms.*
6. **Room Rate:** *Starting at around US\$ 400 per night.*
7. **Target customer:** *Business and leisure travelers.*
8. **Hotel Group:** *Starwood Hotels & Resorts; [www.starwood.com](http://www.starwood.com)*



BANGKOK REPORT  
FEBUARY 2011

**Location Map**



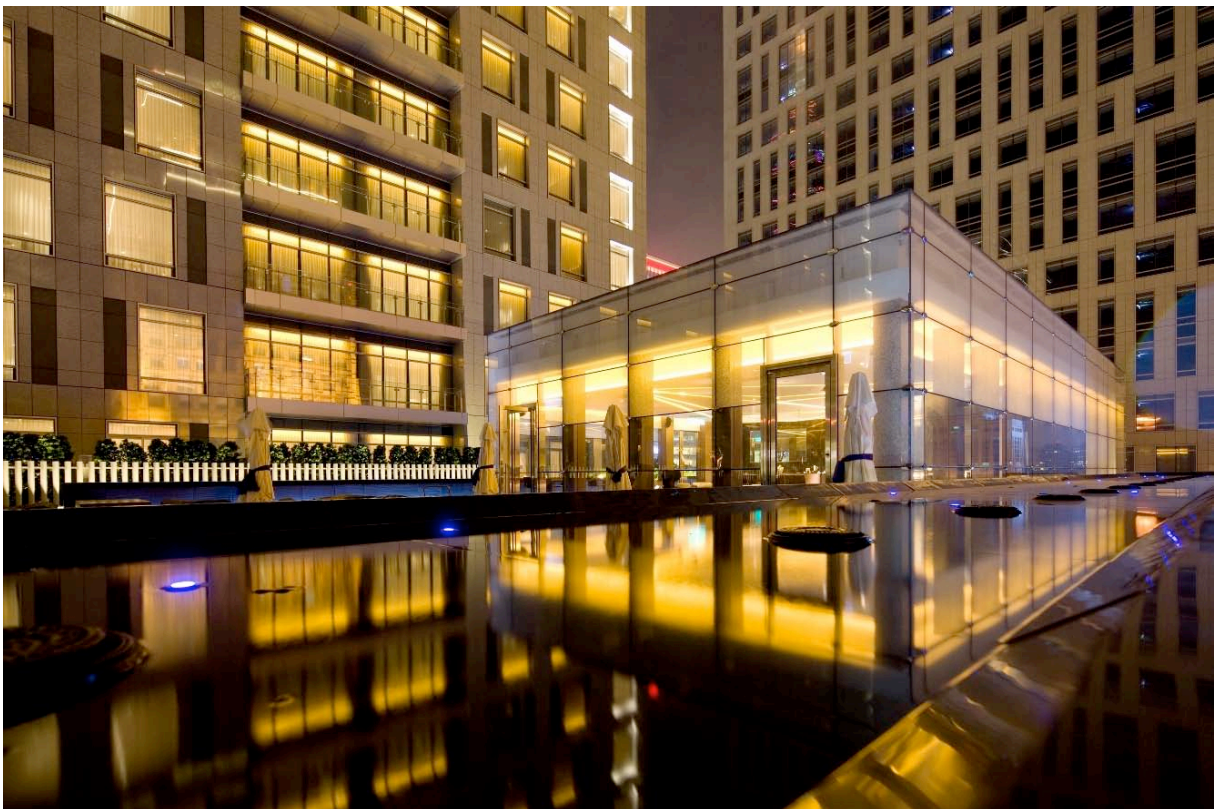
*The hotel is located in the dynamic central business district of Taipei.*

BANGKOK REPORT  
FEBUARY 2011





BANGKOK REPORT  
FEBUARY 2011

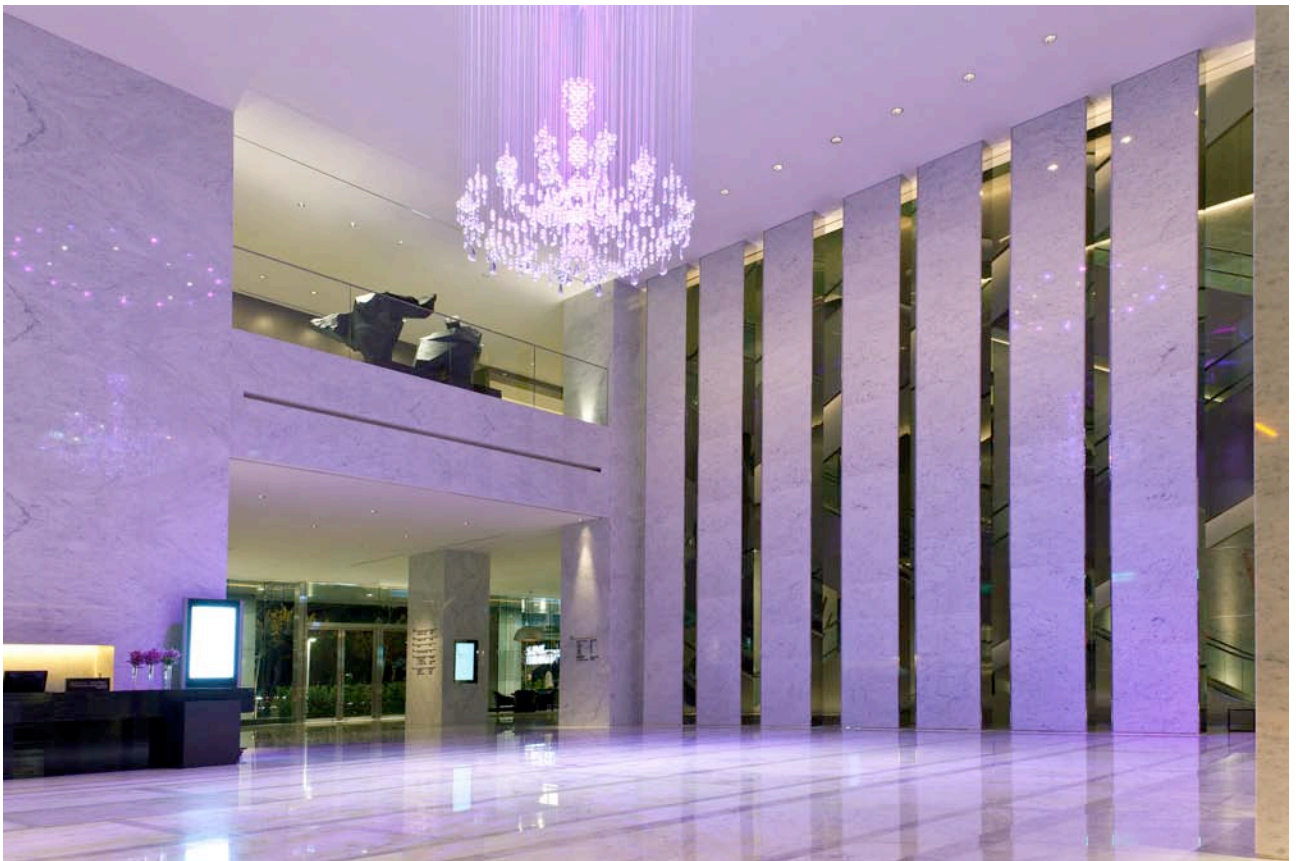




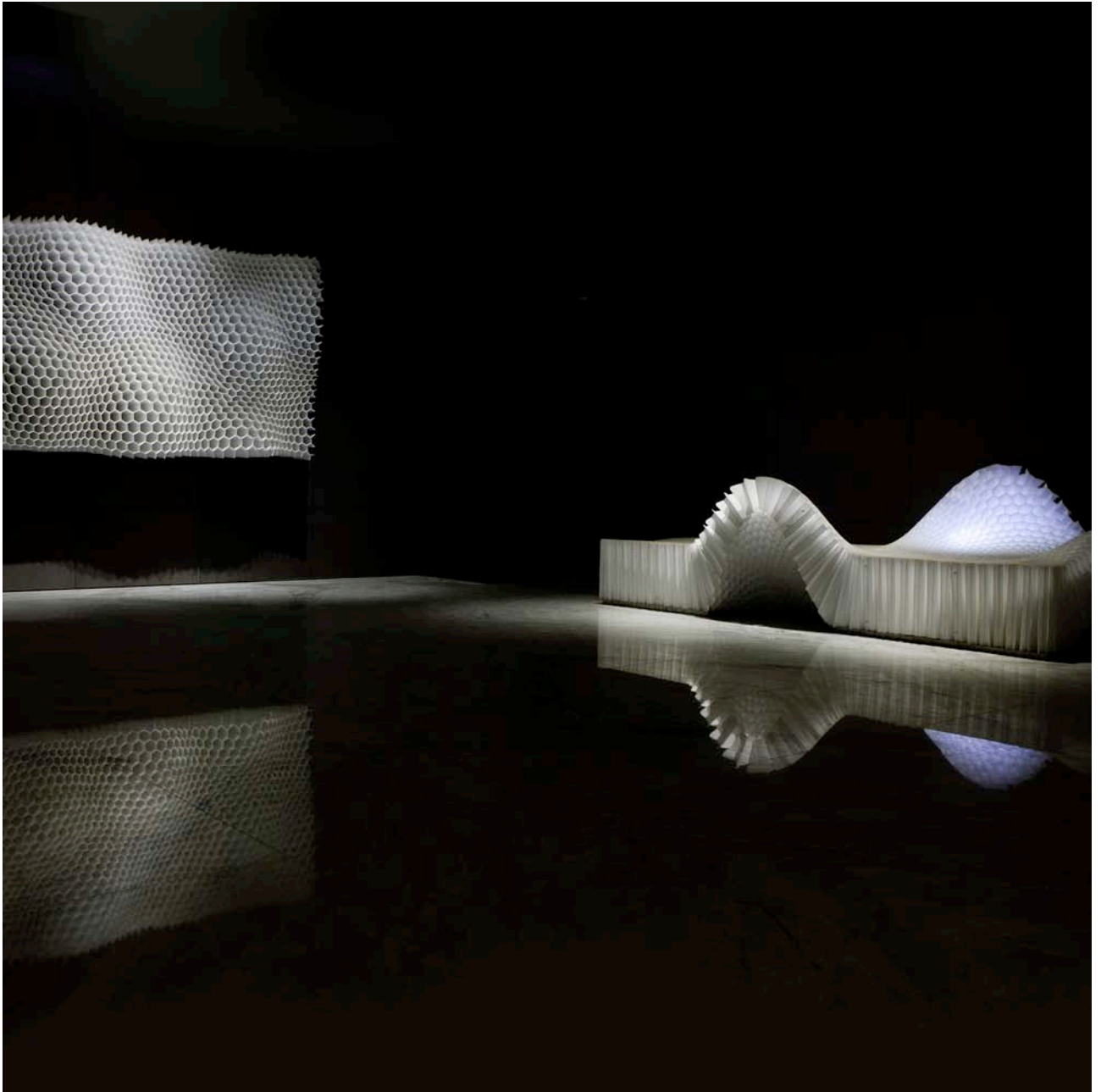
BANGKOK REPORT  
FEBUARY 2011



*The hotels' interior design is chic and minimalistic.*



BANGKOK REPORT  
FEBUARY 2011



*“Inner Waves 01,” an artwork created for Le Méridien by artist Hisham Bharoocha. The artwork across the hotel’s entrance is a signature element of Le Méridien brand’s arrival experience, designed “to reset the guest’s mind upon arrival, leaving the outside world behind and open its mind for the world of Le Méridien.”*



BANGKOK REPORT  
FEBRUARY 2011



*Presidential Suite; all rooms have been designed in a contemporary style using understated color schemes and feature original artworks on the walls.*

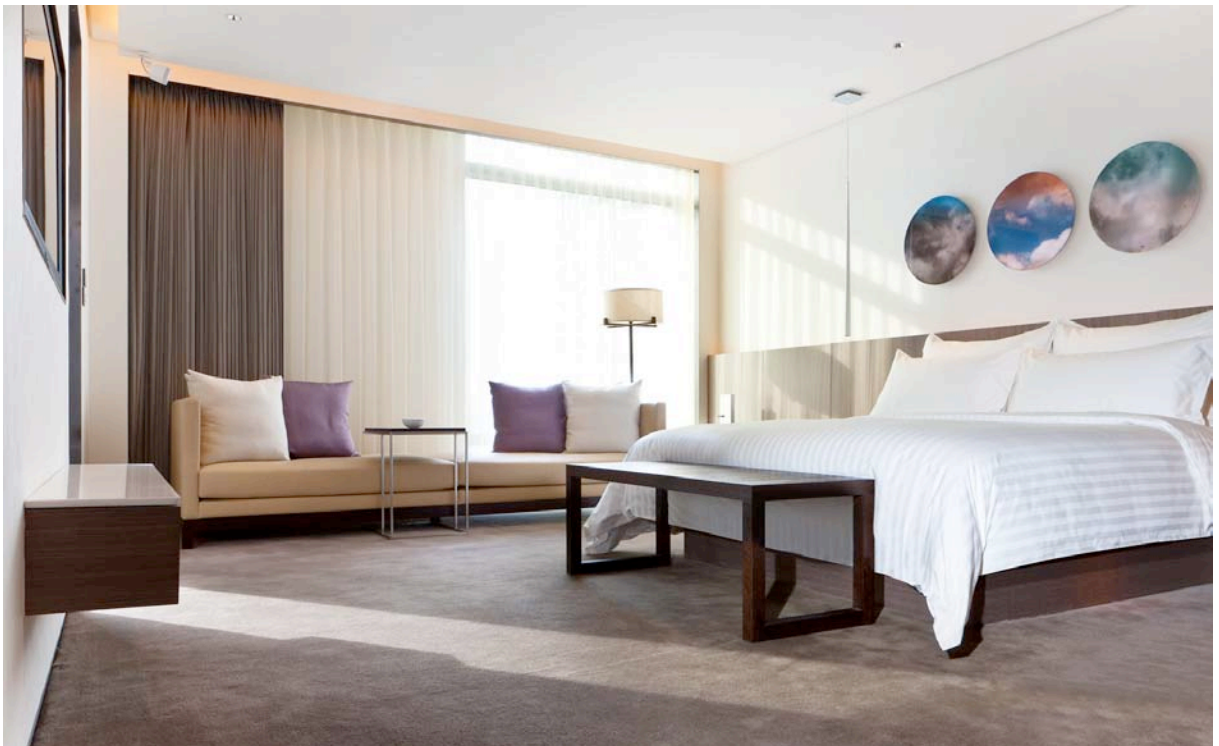




BANGKOK REPORT  
FEBUARY 2011



*Presidential Suite.*



BANGKOK REPORT  
FEBUARY 2011



BANGKOK REPORT  
FEBUARY 2011



*Executive suite.*



BANGKOK REPORT  
FEBUARY 2011



*Deluxe king room.*

BANGKOK REPORT  
FEBUARY 2011



*My Humble House restaurant.*



BANGKOK REPORT  
FEBUARY 2011



*Lounge bar Latitude 25.*

