

Architecture

April 2012

CONTENTS

- **Bangkok Tree House** – Hotel (Bangkok)
- **ISM Parinee Ohm Tower** – Residential Towers (Mumbai, India)

Bangkok Tree House

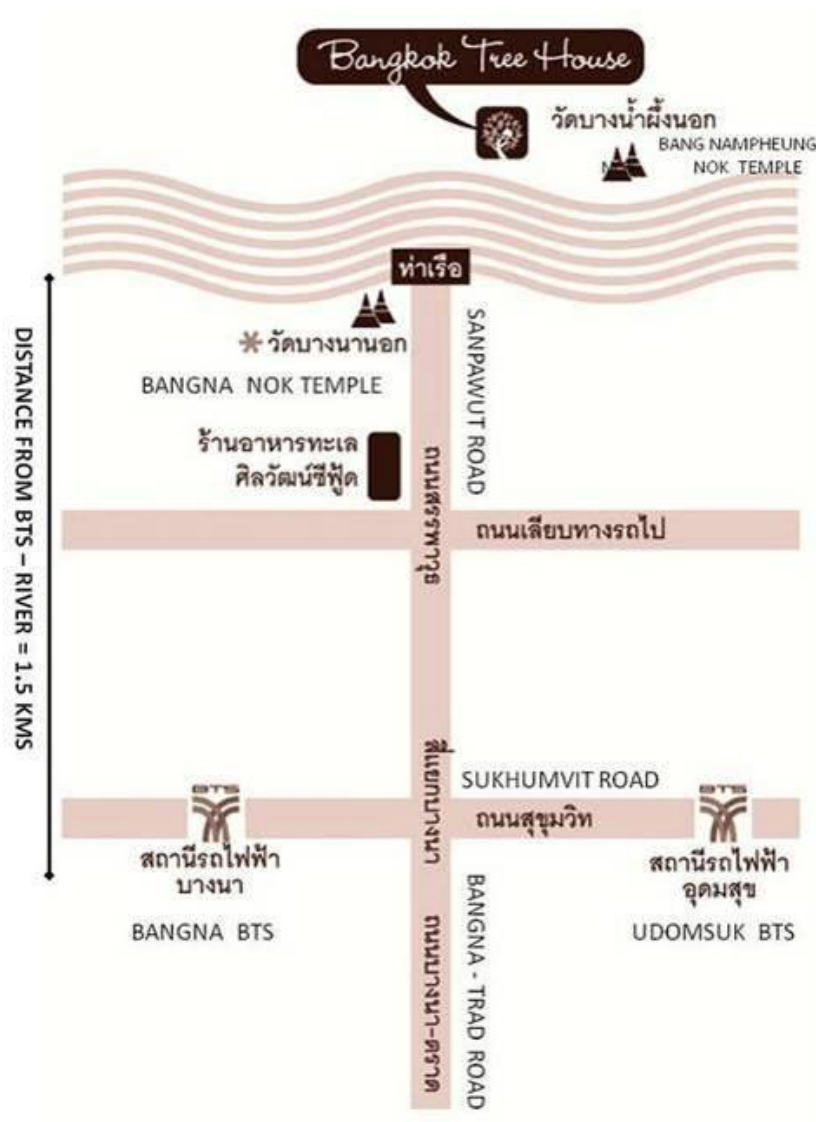
Project Overview

Bangkok Tree House is a cluster of jungle tree houses made out of sustainable materials. Locally sourced bamboo was a major component in the construction process, which also employed up-cycling of discarded materials, including the driftwood that washes onto the riverside property. Discarded juice cartons were used to insulate the walls, used plastic drums were used to build the pier, and reclaimed wood was used to build the walkways.

Furthermore, all kitchen and organic waste are composted, laundry is line-dried; water is served in refillable glass bottles, solar cookers are used to prepare the lunchtime meals; plants clean the air in the rooms and the water in the natural swimming pond; organic herbal soaps and shampoos come from local sellers; outdoor and restaurant lights are powered by the wind and sun; and 2.2 pounds of trash are removed from the adjacent Chao Phraya River for every booking made.

Project Details

1. **Type of Business:** Lodge
2. **Open Date:** April 2012
3. **Concept:** Green philosophy, using sustainable materials and eco-friendly management.
4. **Location:** Bangna, Bangkok
5. **Target:** Nature lovers and environmentally conscious travelers.
6. **Number of rooms:** 12 rooms, ranging from a Tree Top Nest, Honeymoon Nest, Tree House and Family Nest.
7. **Room Rate:** Starting at around US\$ 150 per night for a Treetop Nest.
8. **Developer:** Owner Joey Tulyanond
9. **Architect:** Local architect Nuntapong Yindeekhun
10. **Website:** www.bangkoktreehouse.com

Location Map

Bangkok Tree House is located in the “green lung of Bangkok”, on the banks of the Chao Phraya River, just beyond Bangkok’s city limit. Guest must take a ferry or dedicated shuttle boat across the river to reach the hotel. The pier from which to catch the shuttle boat is 1.5 kilometers from BTS Bangna skytrain station.



Guests arrive via a shuttle boat across the Chao Phraya, disembarking onto a floating pontoon overlooked by the hotel's gourmet organic restaurant.



Locally sourced bamboo was used above the reception area.



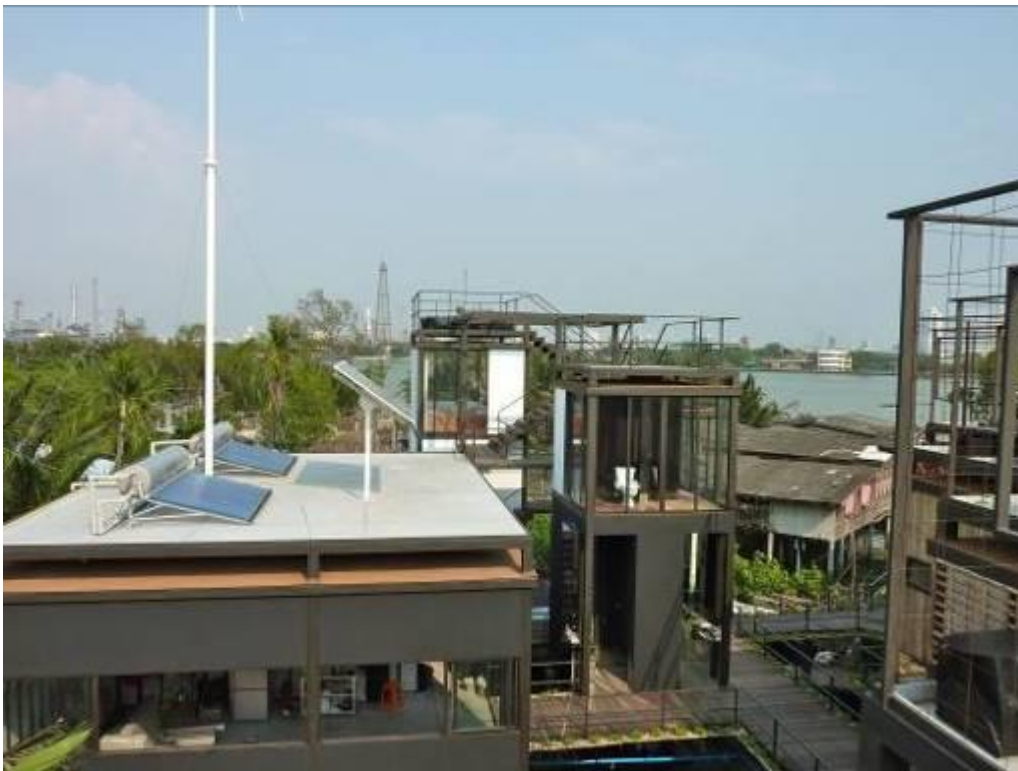
Used plastic drums were used to build the pier.



The hotel's organic restaurant and reception area.



The hotels promises to clean up one kilo of trash from the Chao Phraya River for every booking made.



Solar panels are used to generate electricity.



The Honeymoon Suite.



Locally sourced bamboo was a major component in the construction process.



Night views of the tree house lodge.



It's possible to sleep in the open air.





It's hard to believe that less than two kilometers from the bustling heart of Bangkok, across the Chao Phraya River, you find yourself in a jungle-like environment surrounded by mango palms and lamphu trees.





The butterfly room. Inside, the rooms are comfortable and cozy, all with modern conveniences such as TV, DVD player, Wi-Fi and optional air-conditioning.



Driftwood was used in the hotel construction.





Each standard suite is divided into three levels (living room, bedroom and roof deck), offering views of the surrounding river, mangroves and coconut plantations.



Roof decks with sun beds on top of each suite.



Image of the Tree House when it was still under construction.





(under construction)



(under construction)





Plastic bottles are re-used as plant pots.



ISM Parinee Ohm Tower

Project Overview

Parinee Ism is a 140-meter tall residential tower in Mumbai, India, designed by architect James Law of James Law Cybertecture International. The tower will have approximately 30 storeys of luxurious residential units. Once completed, it will be a spectacular and iconic building, equipped with one of the most stunning architectural feats – transforming standard balconies into swimming pools.

The design concept of the tower is inspired by the ripple effect generated by water droplets. The outline and the ripple pattern can be conceived as an abstract representation of the symbol Ohm (Ω), with a vortex-like space in the center. The tower design is trying to recapture the essence of this space by creating a large void in the middle along with a special designed clubhouse form.

Project Details

1. **Type of Business:** High-rise residential tower
2. **Scheduled Open Date:** Project is currently in tender stage.
3. **Architectural Concept:** Inspired by the ripple effect generated by water droplets
4. **Location:** Mumbai, India
5. **Target:** Affluent residents.
6. **Developer:** Parinee Developers; www.parinee.com
7. **Architect:** Hong Kong-based James Law Cybertecture; www.jameslawcybertecture.com
8. **Website:** www.parineei.com

Location Map

ISM Parinee Ohm Tower is located in Mumbai, on the western coast of the country. Considered the commercial capital of India, Mumbai City is currently undergoing a large amount of development.



The outline of the building can be conceived as an abstract representation of the symbol Ohm (Ω).



The ripple effect usually generates a vortex-like space in the center. The tower design is trying to recapture the essence of this space by creating a large void in the middle along with a special designed clubhouse form.



Once completed, Mumbai will have a spectacular and iconic new landmark.





The tower will be equipped with one of the most stunning architectural feats – balcony swimming pools.



Artist's rendering of a residential unit.