

MILAN REPORT
AUGUST 2012

MILAN REPORT

AUGUST 2012

CONTENTS

- * Project 1: **FOUR SEASONS SPA, MILAN**
- * Project 2: **NU HOTEL, MILAN**
- * Project 3: **CORSIA DEL GIARDINO, MILANO**

LUXURY SPA FOR FOUR SEASONS - *the colors in skin***Project Overview**

Incorporating a spa into a 15th century former convent clearly cannot be rushed or taken lightly. Meticulous planning has therefore ensured that the new additions bring the best in spa thinking while complementing the collection of centuries-old buildings that together make up this very special hotel. This highly sensitive project has been entrusted to renowned Milan-based architect and designer Patricia Urquiola.

"It was a labyrinth," says architect Patricia Urquiola of the space now elegantly occupied by the Spa at Four Seasons Hotel Milano. A decade in the making, the project required Urquiola and her team to create a cohesive sanctuary from several disconnected buildings constructed in different eras. To establish the Spa's structure, Urquiola worked to open up the labyrinth and create clear axes. "The long corridors," she says, "give a flavour of continuity." The first axis guides the guest visually from the entrance, into reception, to the pool. A second axis leads to the changing rooms and VIP suite. The waiting room, with a breezy louvred wall, and the pool area, entered via an archway, offer what Urquiola calls "protected but connected spaces."

Upon those bones, the Spa's surface layer, appropriately, was inspired by the skin. "One of my loves has been to research the colours in skin," says Urquiola. "That is a key idea. You are in the space in your bathrobe, or no more; it is very connected to the skin." That palette is reflected in a subtly blush-toned bas relief, soft coral glass walls and the rosy cast of a 19th-century ceiling. Under Urquiola's direction, the interior design incorporates materials that are native to Italy and unique in design, from warming stones to wooden walls etched with a beautiful pattern. Through a combination of colours and design techniques such as serigraphy, the Spa creates a relaxing environment for guests.

MILAN REPORT
AUGUST 2012

Project Details

1. *Brand: Four Seasons*
2. *Type of Business: Hotel and Spa*
3. *Open date: mid July 2012*
4. *Location: Four Seasons hotel, Via Gesù, 6/8 20121 Milano*
5. *Designer: Patricia Urquiola*

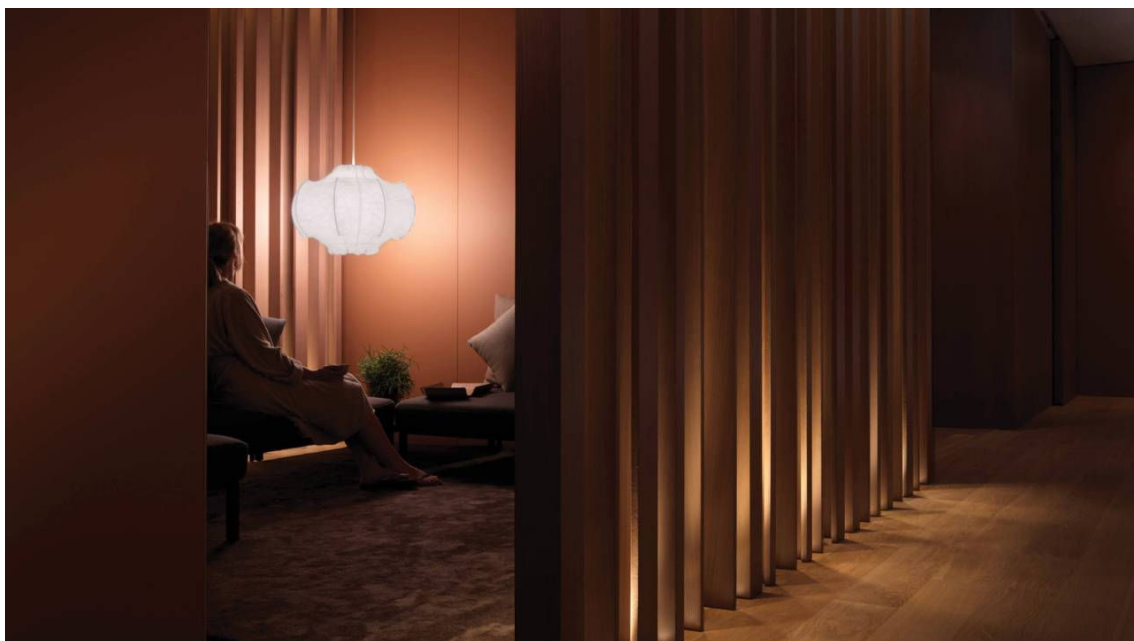
Location Map



MILAN REPORT
AUGUST 2012



Reception



Waiting room

MILAN REPORT
AUGUST 2012



Treatment room



Close-up of etched wall

MILAN REPORT
AUGUST 2012



Swimming pool with 200 years old brick ceiling

4 STARS HOTEL IN MILAN, NU HOTEL**Project Overview**

The Art Hotel was designed with a handcrafting sort of approach: no reproduction in series, no standardized elements, but unique solutions in every single room and space.

The interior design is based on contrasts. The architects avoided the standardization so common in hotels and designed every single element to be unique.

The irregular shaped rooms and common areas, the playfully out of scale sizes, the textural contrasts between the raw and rough outside areas, and the gentle domesticity of the rooms, light and white in color, are the main elements of this language. They provide a series of accessories that intersect with each other, sometimes strongly contrasting in shape, size and regularity, but that create one harmonious delicate, natural and enveloping vision. All elements fully complement each other.

In this way inspiration takes form to create the first real contrast with the big black box, the solid monolithic external structure, with its windows lined up like a strict repetition of out of scale cells. The contrast arises from the competition with the atrium, a large 'cavity' that vertically dissects the entire structure, breaking the patterns and perimetrical rigidities, so the internal space can be traversed via irregular routes.

Creative, intelligent and chic, its distinctive architectural style makes clever use of light, natural materials, understated furniture and original decor. The result is bright, informal and 100% Italian. The material research has analysed the essence of the materials. Hence the choice of weatherbeaten and 'sponged' external black plaster, the bush-hammered concrete, so bare and naked to become almost a texture, the charred doors of the rooms that perfectly represent antimateriality, the evanescence of material things.

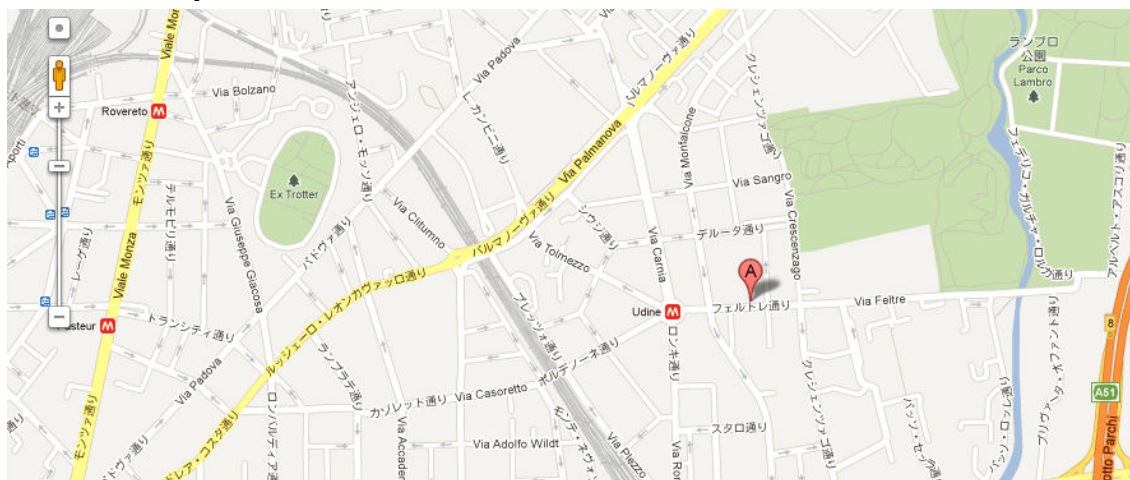
And then the coverings of the interior walls: colours that contrast with the exterior, tone on tone white sands, recalling the brutality of the material, with irregular sanding, holes or small grooves. In a nutshell, the design of the NU Hotel represents the idea of simplicity, telling an essential and pure undisguised truth, unambiguous and unequivocal. A vision of truth, understandable and accessible to anyone.

MILAN REPORT
AUGUST 2012

Project Details

1. *Brand: NU HOTEL*
2. *Client: Geo Family*
3. *Type of Business: Hotel*
4. *Open Date: 16 April 2012*
5. *Location: Via Feltre, 19, Milano*
6. *Designer: Simone Nisi Magnoni architectural studios and Sabrina Gallini*
7. *Flooring: Fmg Greenwood*
8. *Outdoor lighting: iGuzzini*
9. *Indoor Lighting: Zumtobel*
10. *Appliances: Electrolux Home Appliance*
11. *Furniture: Driade*
12. *Carpets: Kasthall Italy*

Location Map



MILAN REPORT
AUGUST 2012



Façade



Left: Reception / Right: Close-up of Key's box

MILAN REPORT
AUGUST 2012



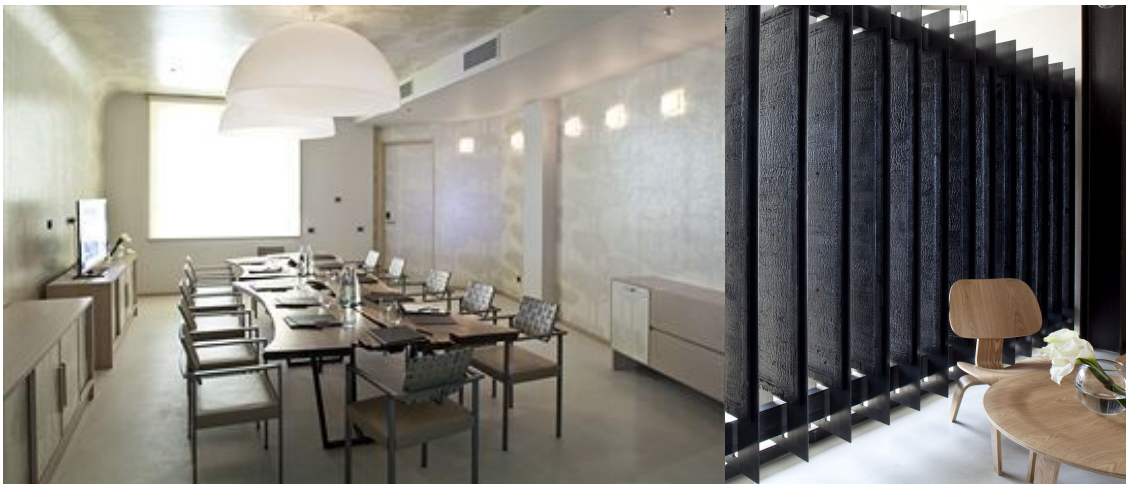
Up-ward staircase view from the ground floor



MILAN REPORT
AUGUST 2012



Interior of various rooms



Left: Conference room / Right: Terrace

MILAN REPORT
AUGUST 2012



Restaurant

CORSIA DEL GIARDINO, BISTROT IN VIA MANZONI**Project Overview**

The new concept - bistro CORSIA DEL GIARDINO which was named because of the street full of historic gardens. The bistrot is located in the center of Milan between Via Montenapoleone and La Scala as an oasis of tranquility and refined quality in a scenic location to be rediscovered.

"The place fascinated me when I crossed the boundary between the access tunnel to the court and Via Manzoni. The eyes are placed on the front garden, inevitably attracted by the bright green of the stately trees that blend with the blue sky and the intense light of the open space as opposed to the darkness of the tunnel behind us. Wonder and curiosity are the feelings that pervade those who enter the court, accompanied by the silence that at each step replaces the noise and the dynamics of via Manzoni. And 'how to close a door behind him. Only turning you realize how little space separates us from the frenzy. A magical setting that corresponds to my idea of a place of refreshment and rest. I had no choice but to live for ever those feelings, bringing them back into the space I was in design, canceling spatial boundaries, thinking of a single space between inside and outside." says the architect Nicholas Gisonda.

The location has 200 square meters with large windows faced to the Poldi Pezzoli garden with the "horses' fountain" by the architect Lomacci while the other side , to the large courtyard which leads you until the main street. The greenery, the space and the garden unite to create an unique atmosphere.

The architect took into consideration colors of ambient and natural material to create a continuity from the external garden to internal "garden". Ming Green Marble, which covers all major surface, is processed and interpreted with contemporary cuts and shapes that combine harmoniously with the oak stained dark brown furniture, flooring to fade in dove gray, all components unpublished specially created for this space. Just green and brown, dominant colors in nature, are prevalent in the nuances of Corsia del Giardino, and are taken up, as in all of the corporate image, even in the original design of the uniforms.

MILAN REPORT
AUGUST 2012

Project Details

1. Title: Corsia del Giardino
2. Client: Corsia del Giardino
3. Period: 05 Jun 2012
4. Location: Milano, via Manzoni n.16
5. Architecture and Interior Design: Nicola Gisonda
6. Graphic consulting: Studiolabo
7. Illustrator: Alessandro Maffioletti
8. Area: 200 sqm
9. Marble: ALIMONTI

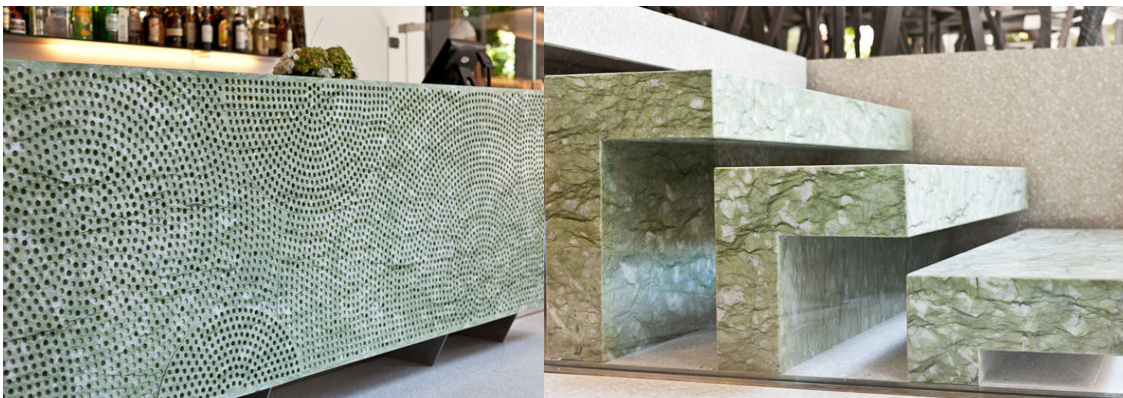
Location Map



MILAN REPORT
AUGUST 2012



Bar counter



Close up of material: green marble

MILAN REPORT
AUGUST 2012



Luminous windows toward garden



Key colors: Green and Dark brown

MILAN REPORT
AUGUST 2012



Interior design inspired from natural elements