

Chiang Mai News

March 2014

CONTENTS

- Project 1: Maya shopping mall (Chiang Mai)
- Project 2: Sireeampan Boutique Resort & Spa (Chiang Mai)

1. MAYA

Project Overview

With its “building as art” concept, newly opened retail center Maya is set to become a landmark of Chiang Mai. The 6-storey building has a rounded shape, with an exterior inspired by traditional patterned Thai silk (“Sabai” fabric). Each of the floors/zones has been differently decorated while maintaining the same design philosophy throughout the project. Key feature of the mall is the Sky Walking Street on the sundeck, which offers spectacular views of Chiang Mai’s scenic cityscape and Doi Suthep mountain beyond, especially at nighttime.

Project Details

1. **Type of Business:** Shopping center
2. **Open Date:** 02/2014
3. **Concept:** Building as art
4. **Location:** Nimmanheiman Road, Chiang Mai
5. **Target Customer:** Local residents and international visitors
6. **Construction Area:** 80,000 sqm
7. **Development & Investment Cost:** 3 billion baht (USD 92 million)
8. **Developer:** Maya Development Co Ltd; www.mayashoppingcenter.com
9. **Operator:** SF Cinema City (SF Group); www.sfcinemacity.com
10. **Architect & Interior Design:** Urban Architects; www.urban.co.th
11. **Website:** www.mayashoppingcenter.com

Location map



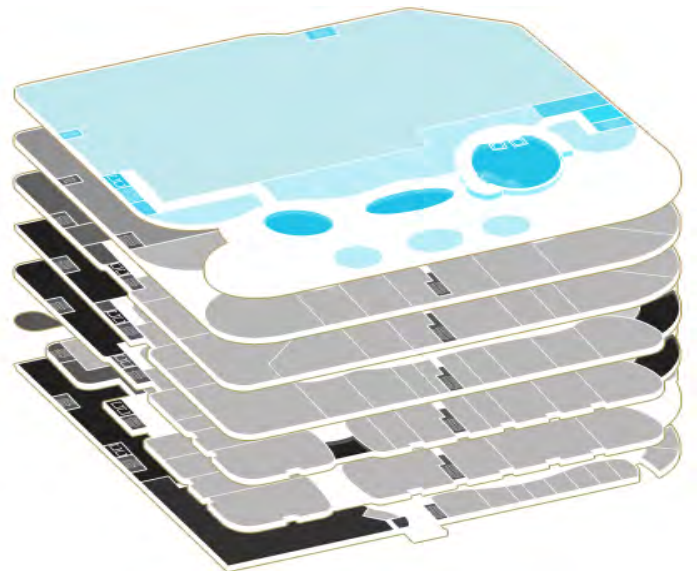
Maya is located on the corner of Huay Kaew Road and the Super Highway in Chiang Mai.



Artist's rendering of Maya shopping mall.



The façade was inspired by traditional patterned Thai silk.



The highlight of the 6-storey mall is the Sky Walking Street on top of the building which offers scenic views of the city and surrounding landscape.



A carefully chosen retail mix promotes a continuous flow of traffic, as if one were on an outdoor walking street.



2. SIREEAMPAN BOUTIQUE RESORT & SPA

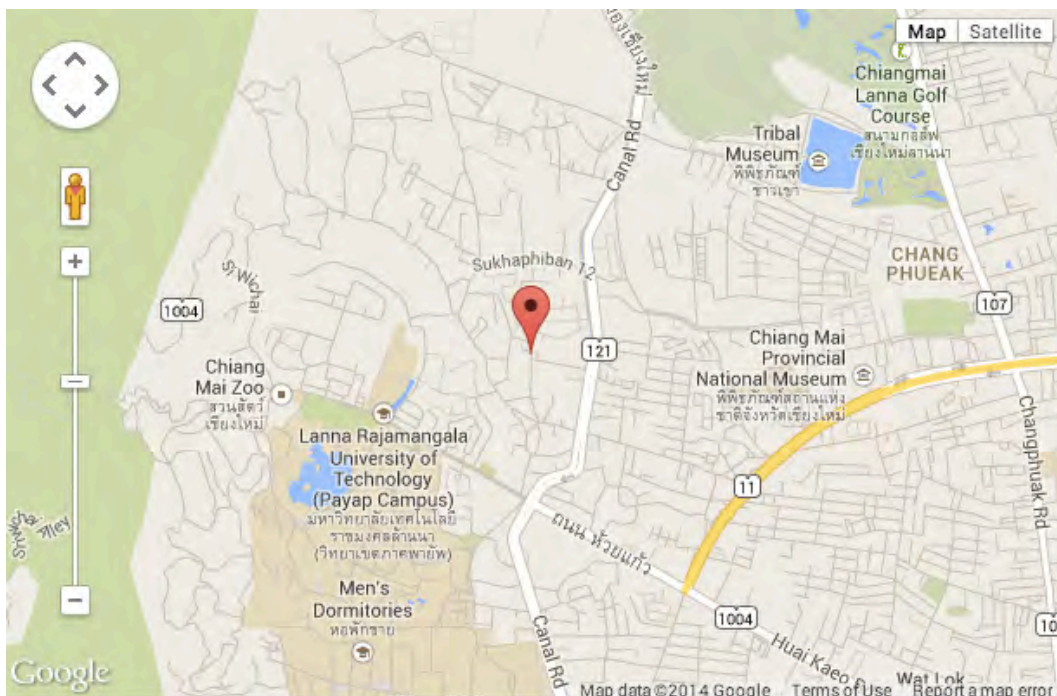
Project Overview

Drawing inspiration from the intricate architecture of Thailand's Ratanakosin era, Sireeampan Boutique Resort & Spa is built as a grand Thai house, with a cozy cloister of buildings that are encircled by lush gardens with 11 exquisitely appointed private guest suites, a full-service restaurant, a stylish piano lounge and wine cellar, and fully-equipped state-of-the-art fitness and business centers.

Project Details

1. **Type of Business:** Luxury resort
2. **Open Date:** 01/2014
3. **Concept:** Inspired by the architecture of Thailand's Ratanakosin era.
4. **Location:** Chiang Mai
5. **Target Customer:** Luxury travelers
6. **Number of rooms:** 11 suites, ranging in size from 40 to 60 sqm
7. **Room Rate:** Starting from around THB 16,000 (\$ 500) per night.
8. **Website:** www.sireeampan.com

Location map



Sireeampan Boutique Resort & Spa is located in Chiang Mai City, close to attractions such as Chiang Mai's Old Town, Doi Suthep, Hwai Kaeo Falls, Royal Winter Place and Doi Pui tribal village.



Surrounded by lush, tropical greenery, the resort's intricate design was inspired by the Thai royal manors of the 18th century and Chiang Mai's rich heritage.





Karaoke Suite.



Terrace in the afternoon.



Restaurant.



Business lounge.



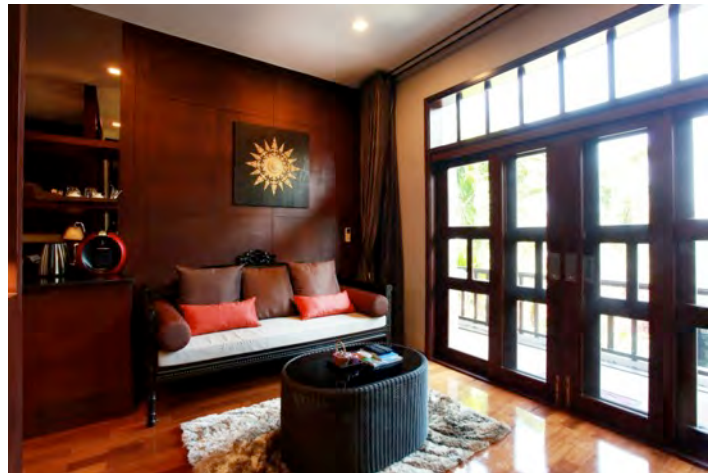
Spa suite with steamroom.



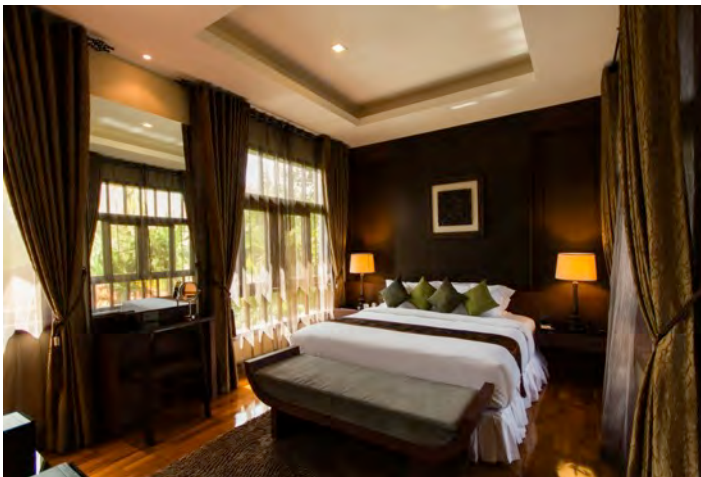
Each guest suite is named for one of 11 gemstones that comprise Thailand's rich jewelry heritage. Guest accommodation features marble bathrooms with a rain shower and bathtub along with complimentary L'Occitane bath amenities.



Suite with twin beds.



Suite lounge.



Suite bedroom.



Suite bathroom.