

Thailand News

January 2017

CONTENTS

- Project 1: Hubba-to at Habito community mall (Co-working space, Bangkok)

1. HUBBA-TO

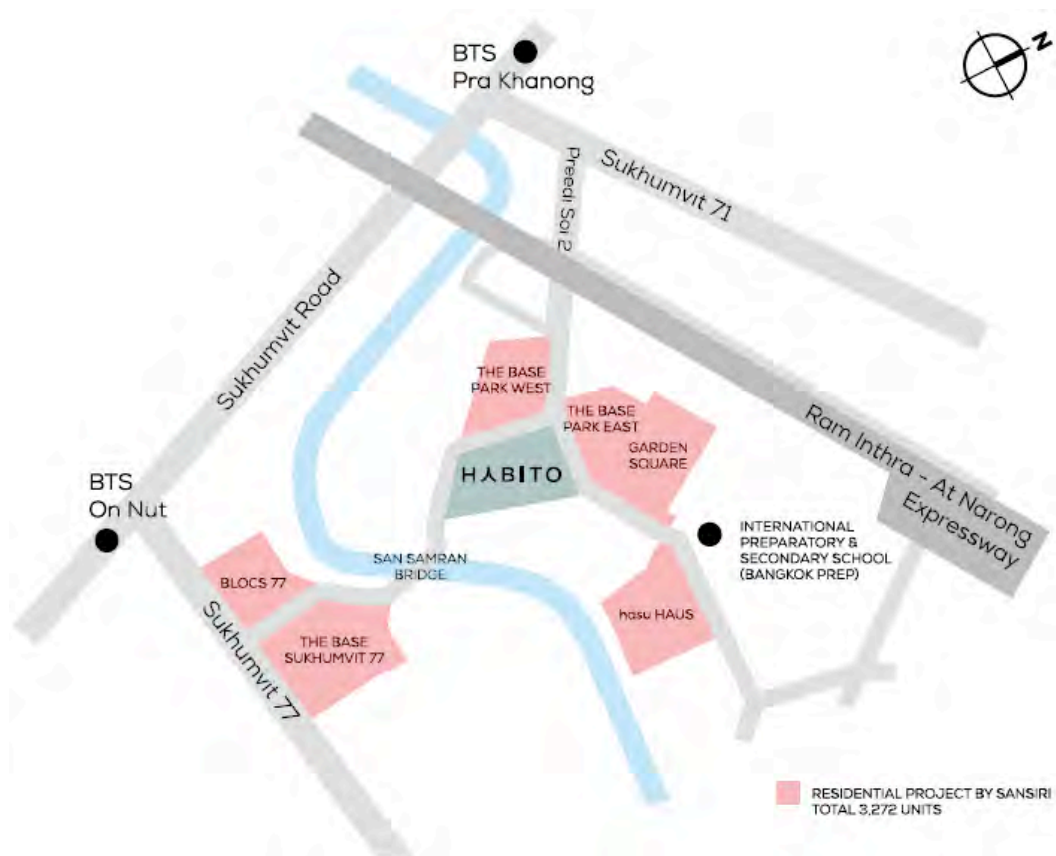
Project Overview

Hubba-to is Southeast Asia's newest co-working and creative space located at a new community mall called Habito mall in the residential area of On Nut in Bangkok. At 989 square meters it's also the largest co-working environment in Southeast Asia. There are 7 fully equipped artisan workshop studios including a dark room for photography, wearable arts room for fashion designers, ceramic room for pottery, woodworking room, screening room for film and photography as well as lectures and seminars, and a "marker space" fully equipped with digital tools such as laser-cutting machines and 3D printers.

Project Details

1. **Type of Business:** Co-working and creative space
2. **Open Date:** 09/2016
3. **Location:** Habito community mall, Sukhumvit Soi 77, Bangkok
4. **Area:** 989 sqm
5. **Interior Designer:** Supermachine; www.supermachine.co
6. **Developer (Habito community mall):** Sansiri; www.sansiri.com
7. **Website:** www.facebook/hubbato

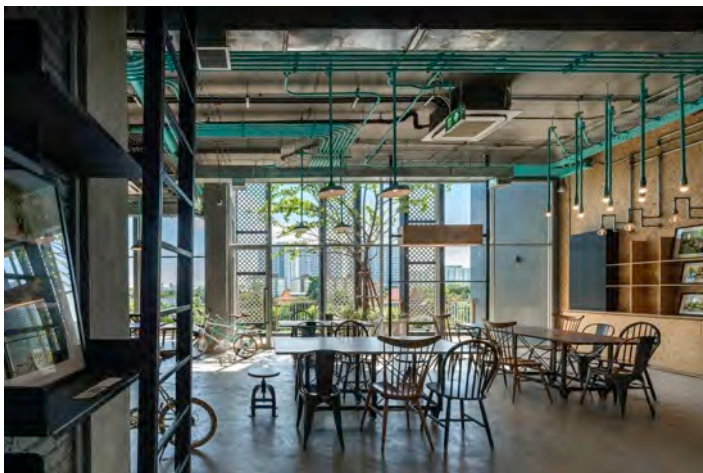
Location map



Hubba-to is located at Habito community mall near Sukhumvit Soi 77; closest BTS skytrain station is On Nut.



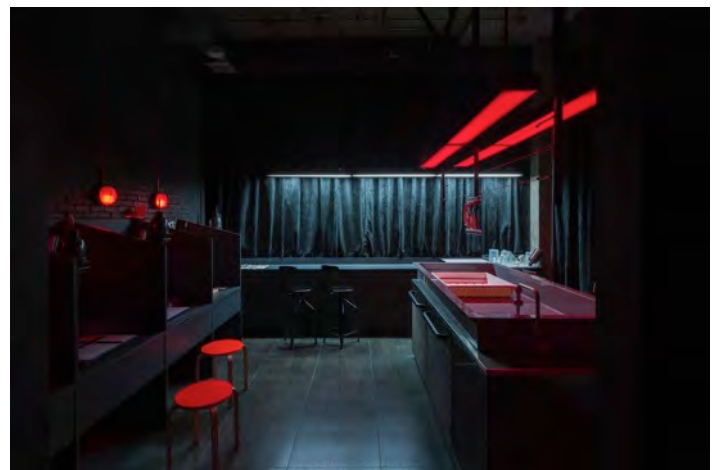
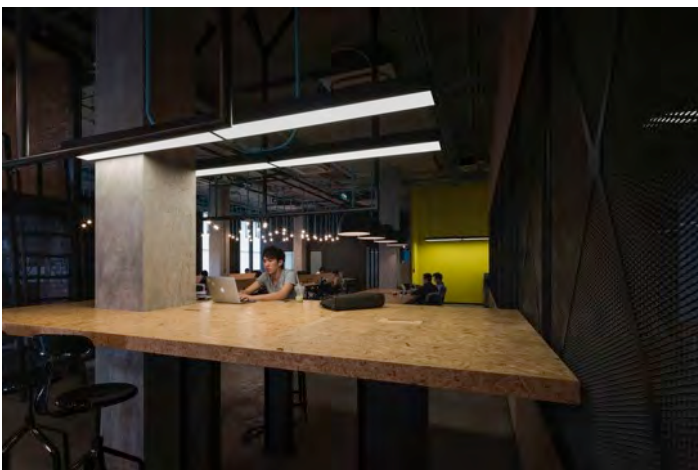
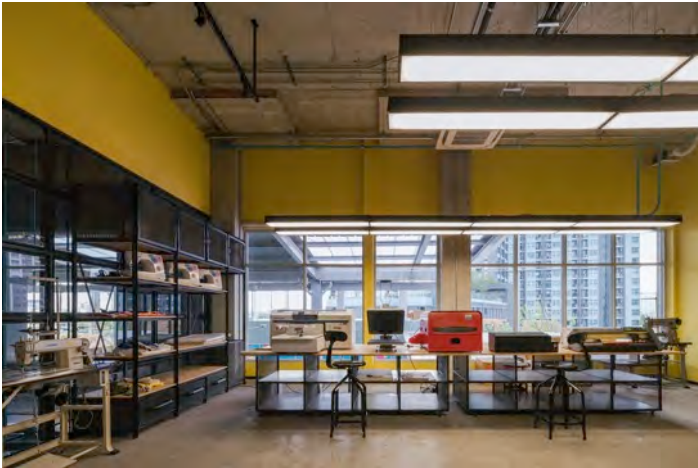
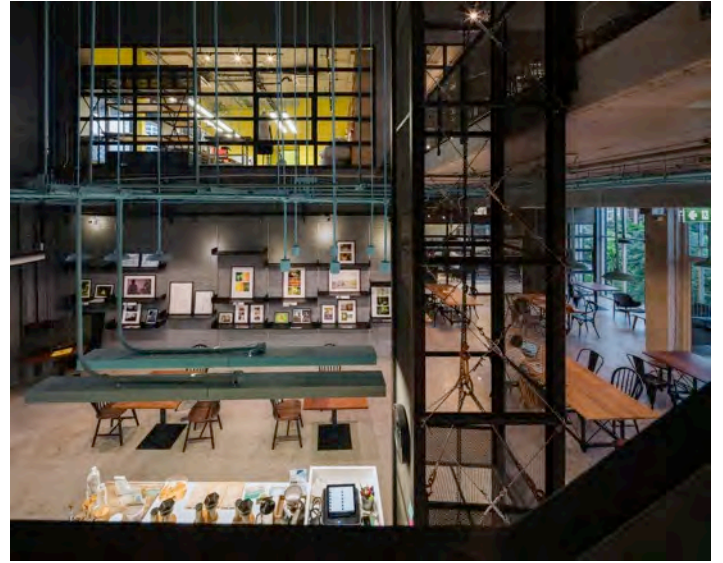
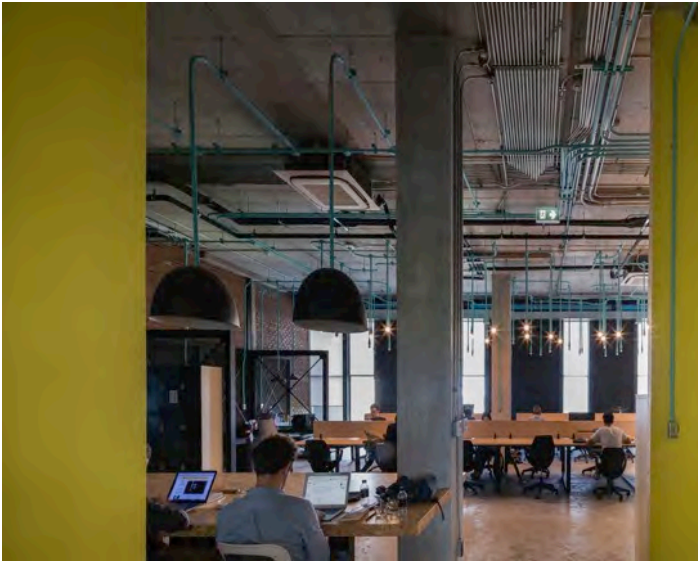
Artist's impression of community mall Habito, a Japanese-style mall with 32 retail tenants.



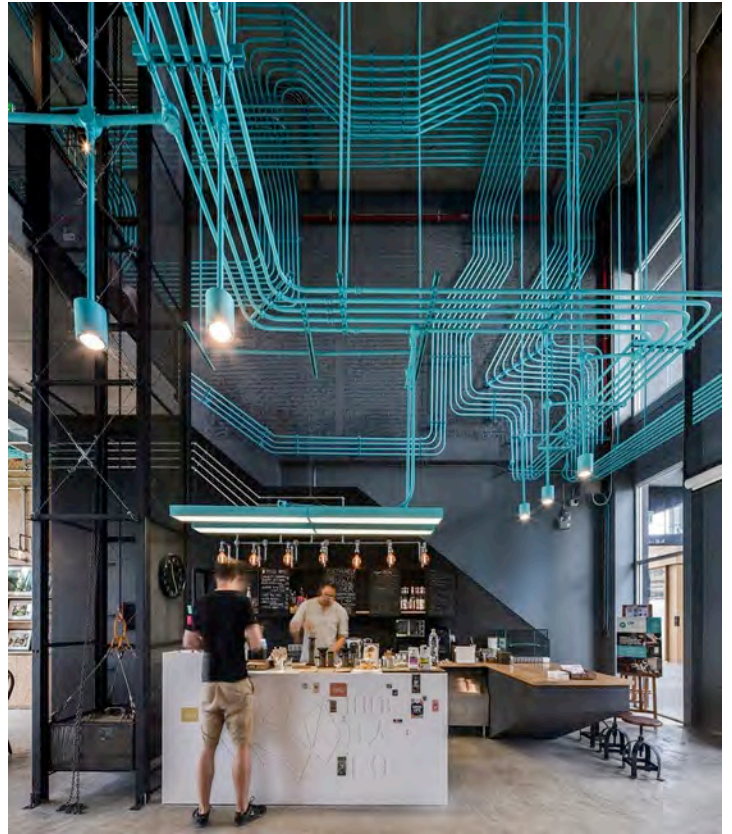


Hubba-to is open 24 hours a day. They aim to create a true creative hub and to boost the development of Thailand's design and creative fields.





There are 7 fully equipped artisan workshop studios including a dark room for photography, wearable arts room for fashion designers, ceramic room for pottery, woodworking room, screening room for film and photography as well as lectures and seminars, and a space fully equipped with state-of-the art digital tools such as laser-cutting machines and 3D printers.



Instead of hiding the pipes, the designers emphasized them with a bright turquoise color. They then allowed the pipes' shape and ever-present connecting and joining function to become the one unifying décor theme.

