

## Thailand News

August 2021

### CONTENTS

- Project 1: The Haute (Residential Building, Bangkok, Thailand)

## 1. THE HAUTE

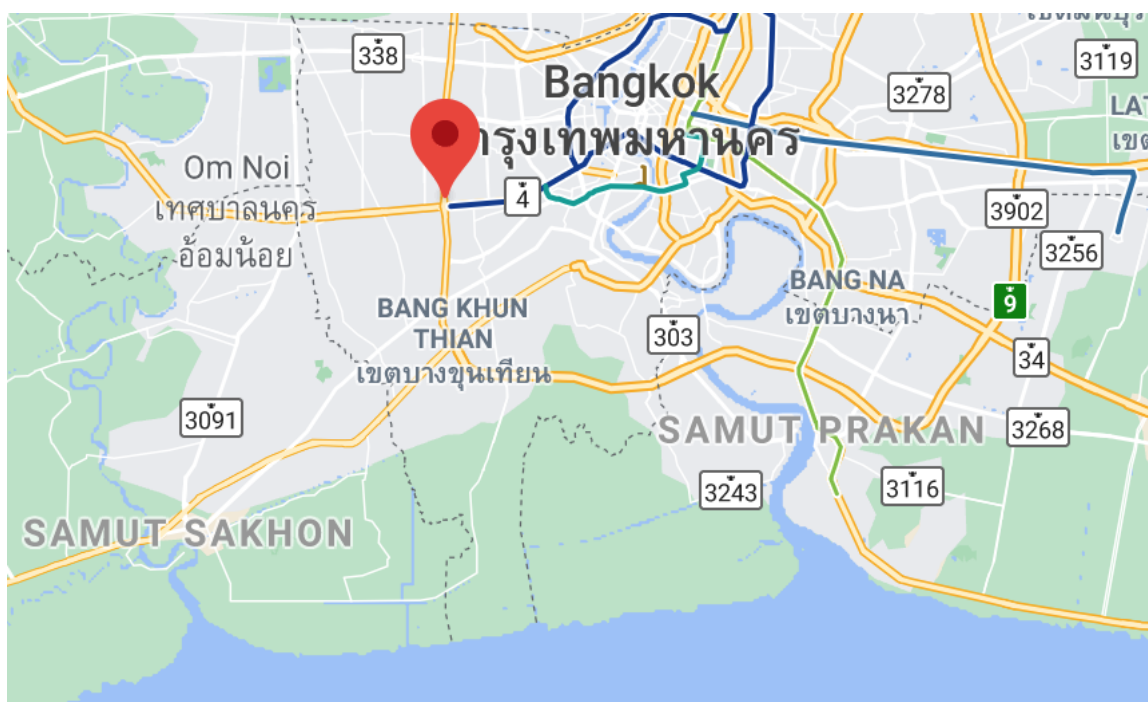
### Project Overview

Designed by local architectural firm Ayutt and Associates design, The Haute comprises two home-office buildings containing 14 units. The Haute aims to be a self-sustainable and multi-generational workplace and residence. The building concept started with the simple idea of stacked boxes – one a black stone box and the other an aluminum box. These boxes serve the two main functions of living space and working space, with windows designed in such a way as not to face each other for the most privacy possible. To create a sense of a “private oasis”, trees were placed where possible in the building. Voids in the building filled with greenery create natural ventilation as well as pocket gardens.

### Project Details

1. **Type of Business:** Residential buildings
2. **Open Date:** 2020
3. **Location:** Kanchanapisek Road, Bang Khae, Bangkok, Thailand
4. **Site Area:** 300 sqm per building
5. **Construction Area:** 650 sqm per building
6. **Total number of units:** 14
7. **Lead Designers:** Ayutt Mahasom and Suvatthana Sattabannasuk
8. **Architecture & Interior Design:** Ayutt and Associates design (Bangkok); [www.aad-design.com](http://www.aad-design.com)
9. **Landscape Design & Lighting Design:** Ayutt and Associates design (Bangkok); [www.aad-design.com](http://www.aad-design.com)

### Location map



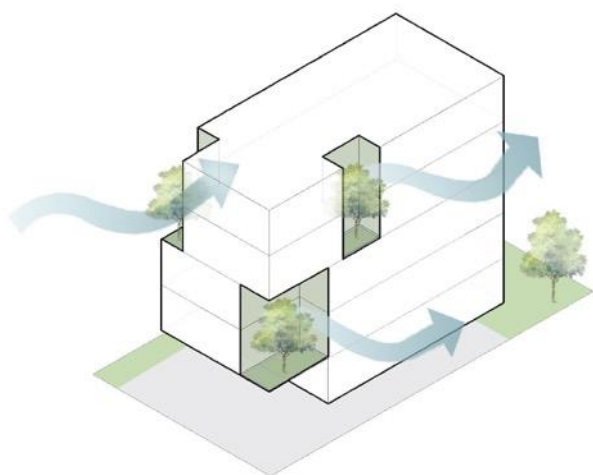
The Haute is located Bang Khae district, southwest of Bangkok.



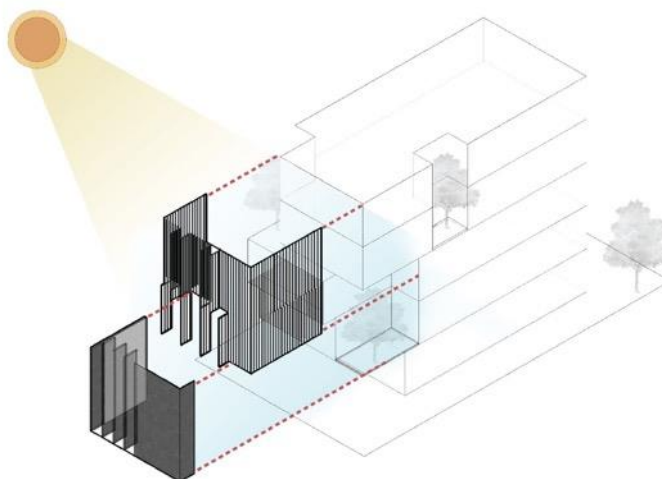
The building concept started with the simple idea of stacked boxes, including a black stone box and an aluminum box.



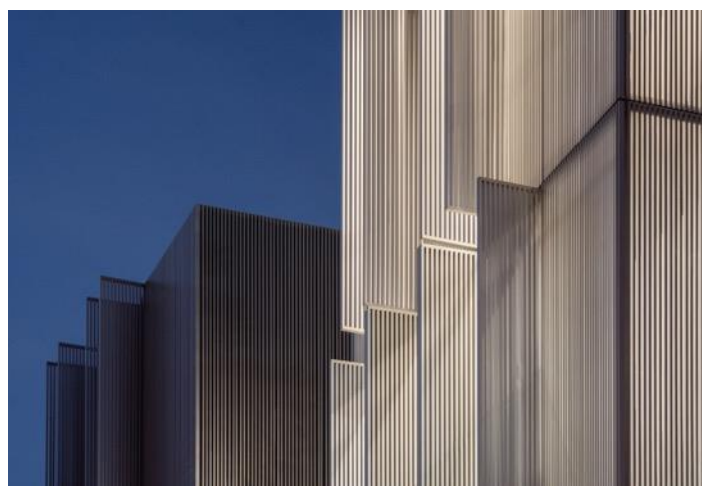
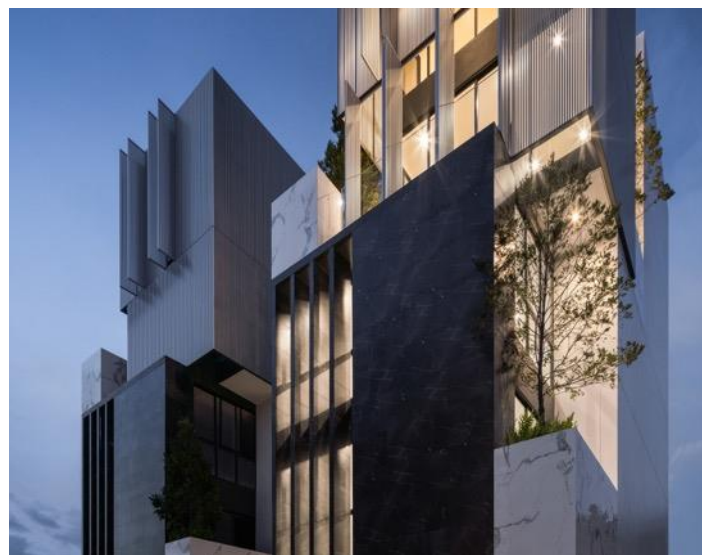
The windows are designed to not face each other for utmost privacy.



Voids in the building filled with greenery create natural ventilation as well as pocket gardens.



Screens create privacy in the living spaces and protect the building from direct sun heat.







The project was designed to maximize both the usable site area and green open spaces, while allowing for maximum ventilation in response to the tropical climate.









Internal spaces are designed to allow residents to enjoy their own private garden.



