

Thailand News

April 2024

CONTENTS

- Project 1: Yanh Ratchawat Hotel (Bangkok, Thailand)

1. YANH RATCHAWAT HOTEL

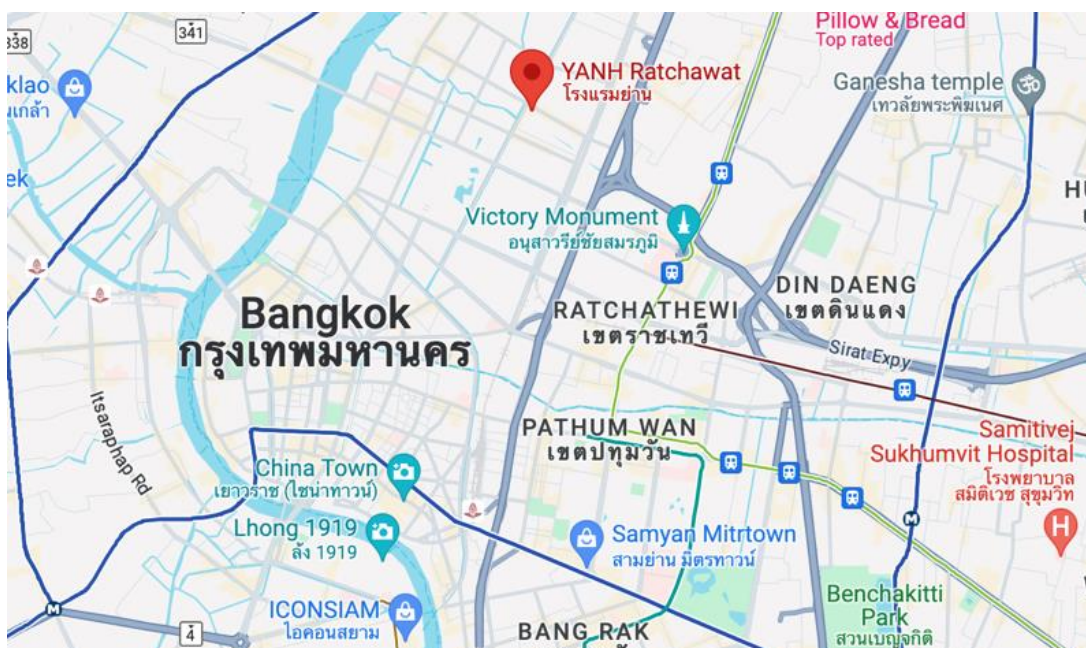
Project Overview

YANH, which stands for "Your Average Neighborhood Hotel," immerses visitors in the customs and atmosphere of Bangkok's Ratchawat district. Situated on Rattanakosin Island, Ratchawat is close to popular tourist attractions like the Grand Palace and the famous Wat Pho temple. Its ancient town district is easily accessible, and it has an authentic local atmosphere that is not yet well-known to tourists. CHAT Architects restored the three existing buildings rather than opting for new construction, skillfully incorporating features of the area's historic architecture into the hotel's layout. The region is known for its hybrid architectural style, which incorporates diverse elements such as canal bridges and colonial mansions. Innovative solutions addressed challenges inherited from the original building, such as room size and lack of scenic views, with techniques like extending room walls into corridors and introducing glass partitions for natural light. Integration of neighboring shophouses as communal areas further enhanced the project's cohesion with the neighborhood, showcasing how thoughtful design can create a harmonious space.

Project Details

1. Type of Business: Hotel
2. Open Date: 01/2024
3. Location: Ratchawat area, Bangkok, Thailand
4. Room Rate: Starting at around THB 3,000 (USD 80) per night.
5. Architect: CHAT Architects (Thailand); www.facebook.com/chatarchitects
6. Developer: SC Asset; www.scasset.com/en
7. Website: www.yanhhotel.com

Location map



YANH Ratchawat hotel is located in the authentic Ratchawat neighborhood near Bangkok's renowned tourist spots.



The main building was once an apartment complex, but it was cleverly converted into a hotel building that is concealed behind a series of shophouses.

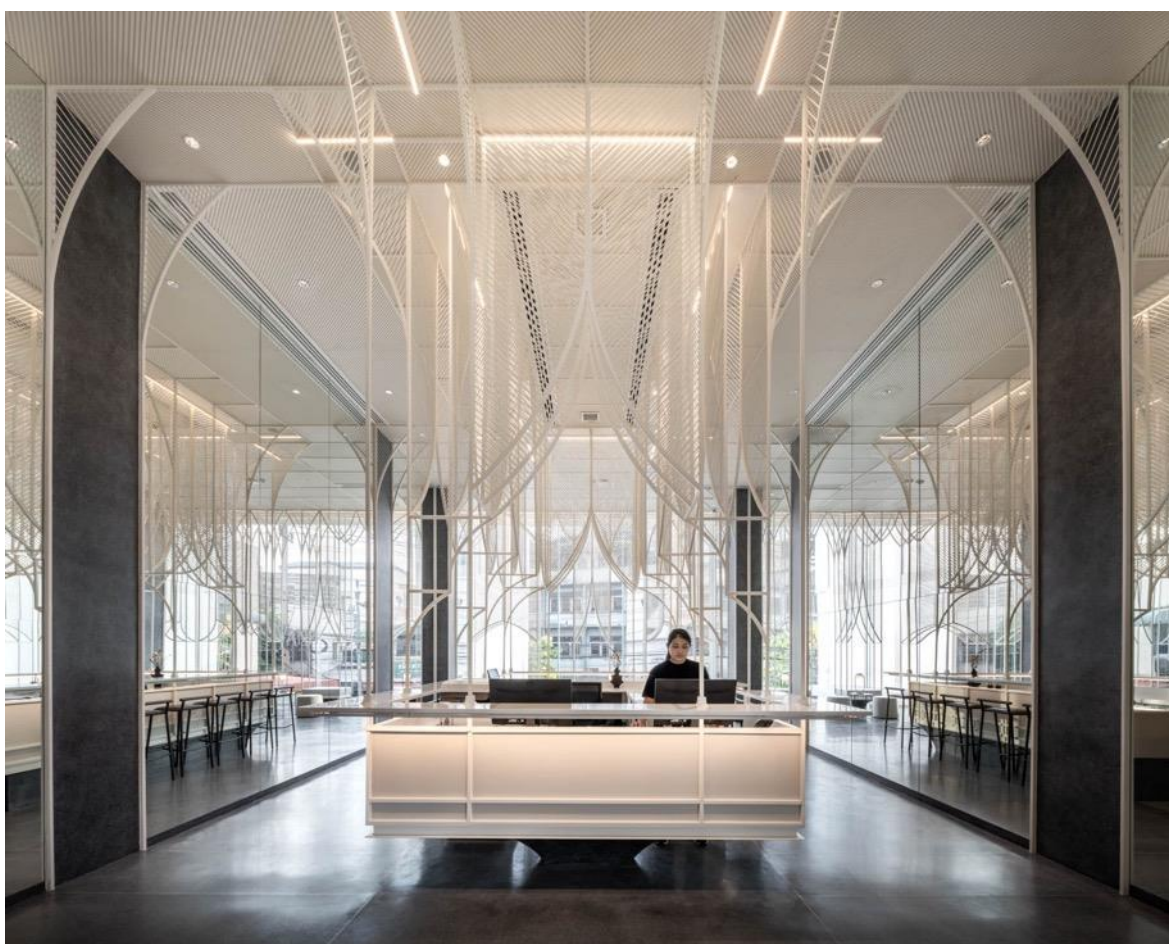
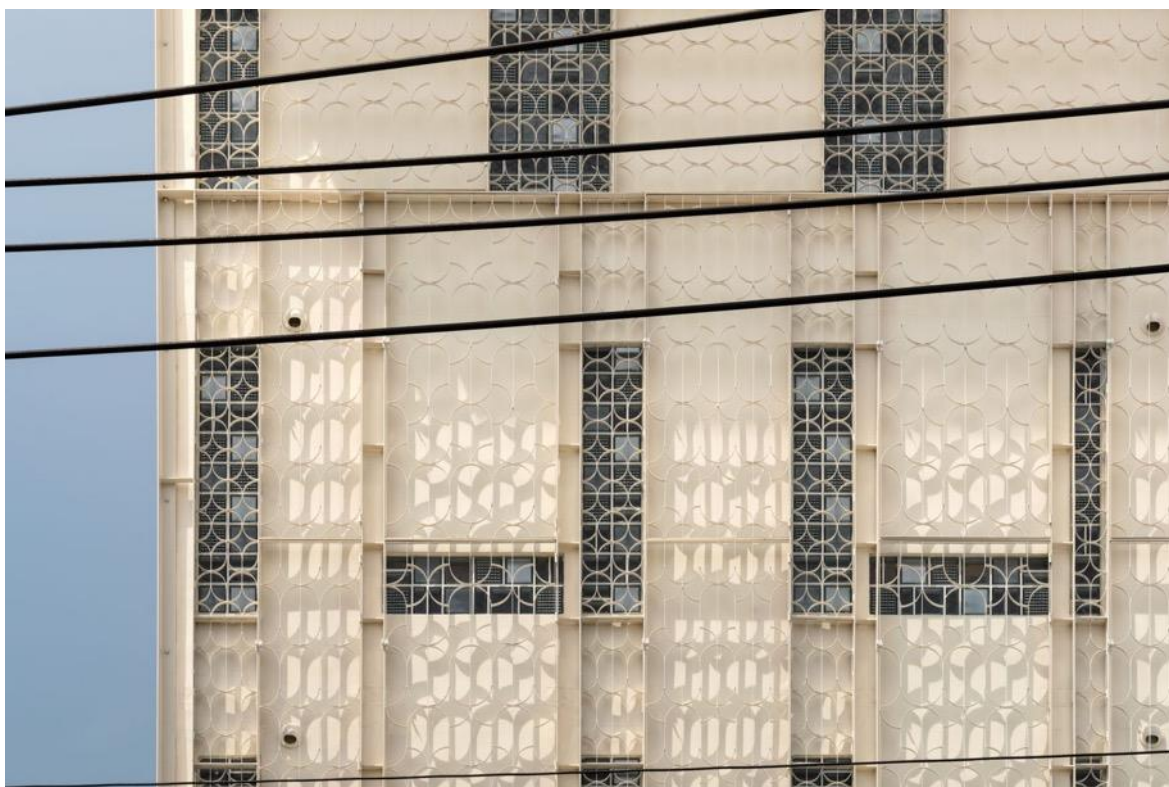




The original apartment building faced challenges such as lack of picturesque views, particularly on lower floors facing the rear of shophouses. Rooms were too large for hotel use as they exceeded 10 meters. To address this, walls were extended into the corridor by 3 meters, creating appropriately sized rooms. Surplus space was converted into atriums connecting floors, forming bridges between corridors and rooms. These open spaces allow natural light, preventing congestion and enhancing ventilation via the stack effect.



Windows were installed on the frontside facing the corridor to invite natural light and the lively ambiance from outside.



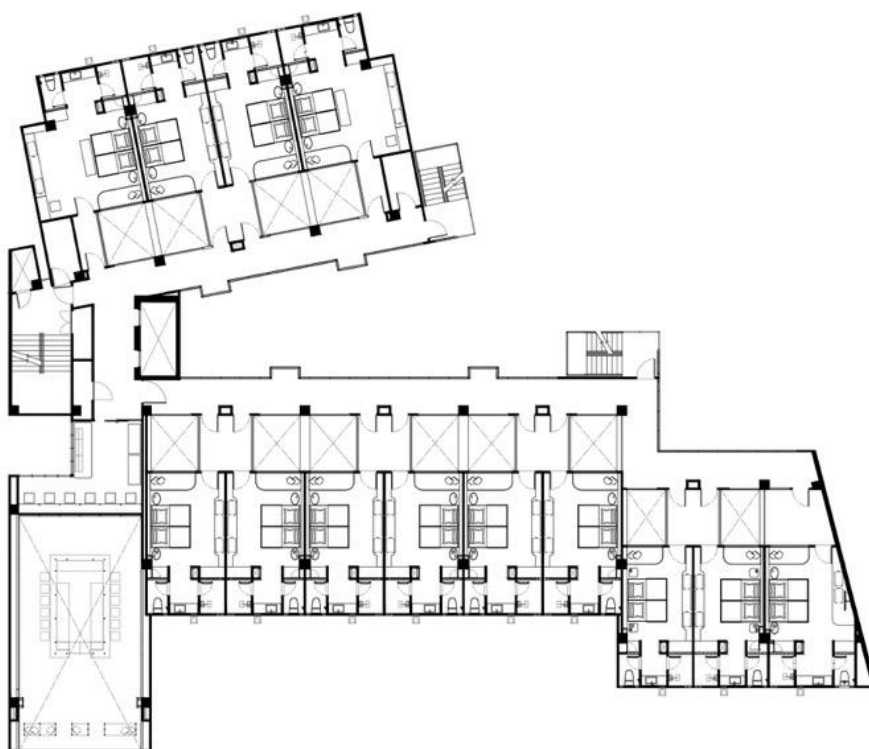
Once home to apartment units, the second-floor corner is now the hotel lobby. The room includes a central counter, large glass windows, and seating sections with ornate white iron details lining them.



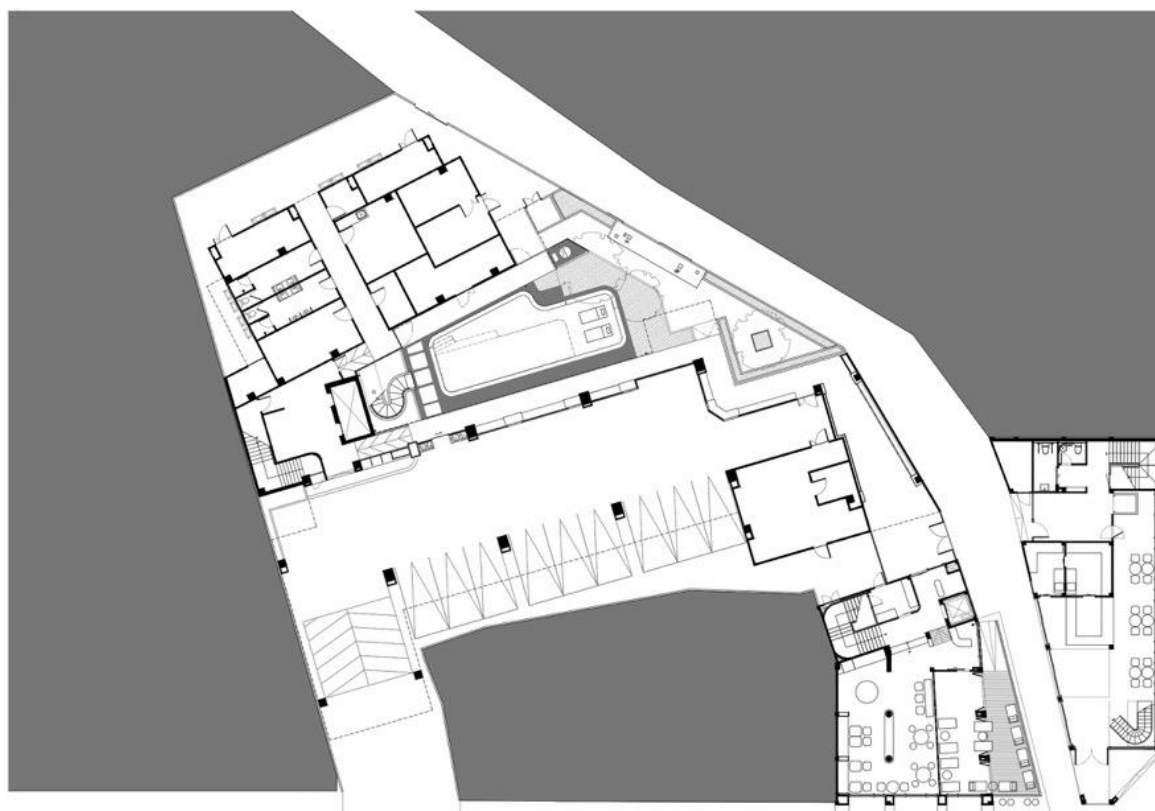
The lobby's spectacular decorative elements were inspired by the wrought iron and curved steel embellishments found on canal bridges in the area.



The architecture team strategically repositioned the walls of the existing corridors to accommodate plumbing and reinforced them with extra supports, ensuring the final outcome that is reminiscent of colonial buildings in the area.



THIRD FLOOR PLAN



NAKHON CHAI SI R.

SITE PLAN