

New York Report

May,2025

CONTENTS

* Project 1: Davis Center at the Harlem Meer

1. Davis Center at the Harlem Meer

Project Overview

The Davis Center at Harlem Meer, located in the northeastern corner of Central Park, is a visionary project by the Central Park Conservancy—an organization founded in 1980 to preserve and enhance the park, particularly the East Harlem area. Over the past 40 years, the Conservancy has invested more than \$1 billion in improving Central Park, a vital public space for relaxation and recreation. From the outset, the Harlem end of the park has been a priority for development, and this latest initiative reflects that focus, backed by a substantial \$160 million investment. Designed around four key themes—*history*, *landscape*, *recreation*, and *urban life*—the center follows the natural curves of the surrounding parkway and integrates harmoniously into the tree-lined landscape. Local media have highlighted its role as a welcoming community hub for all generations. One of the center's most distinctive features is its adaptability across seasons. In summer, it operates as a public swimming pool, while in winter, it transforms into an ice skating rink. During spring and autumn, the space offers a range of free or affordable activities, such as yoga, meditation, and arts and crafts workshops for children. The Davis Center is also targeting LEED Gold certification, the highest level of recognition in the green building rating system. The facility incorporates locally sourced wood and stone, a rainwater-absorbing roof for disaster resilience, and comprehensive energy-efficient systems—making it not only a community landmark but also a model of sustainable design.

Project Details

1. Davis Center at the Harlem Meer
2. Public Park
3. Open Date: April 26th, 2025
3. Location: 106 – 51 East Dr, New York, NY 10026
4. Target Customer: All
6. Website: <https://daviscenter.centralparknyc.org/>

Location Map





Entrance to facility overlooking pond northeast of Central Park



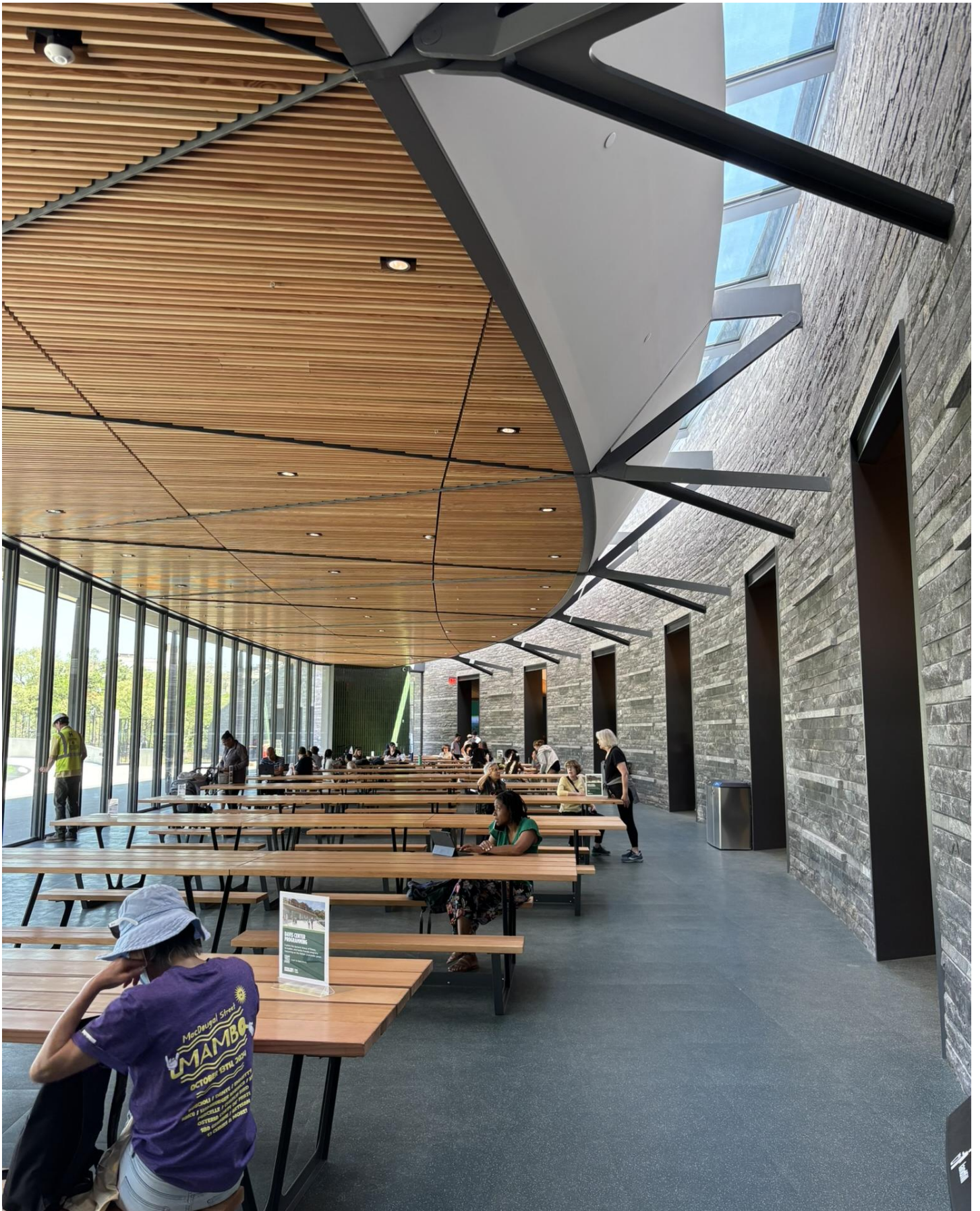
Walk along the pond and you will see Davis Center.



The building features curved wooden ceilings and green tiles that harmonize with the surrounding trees, reinforcing its connection to the natural landscape.



Oval-shaped grassy plaza with a variety of activities



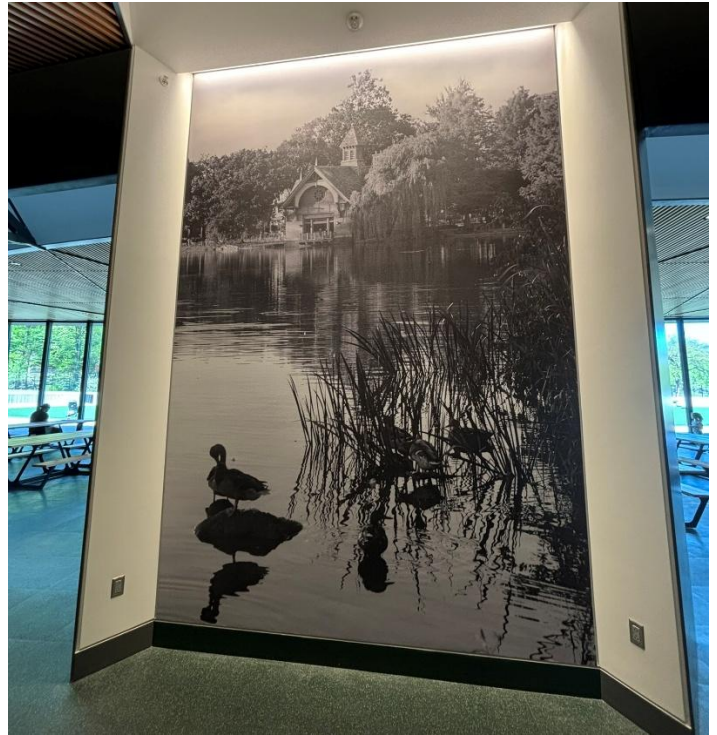
The interior is a comfortable and relaxing space with light from the ceiling.



Large open windows



Exterior green tiles are also used in the interior



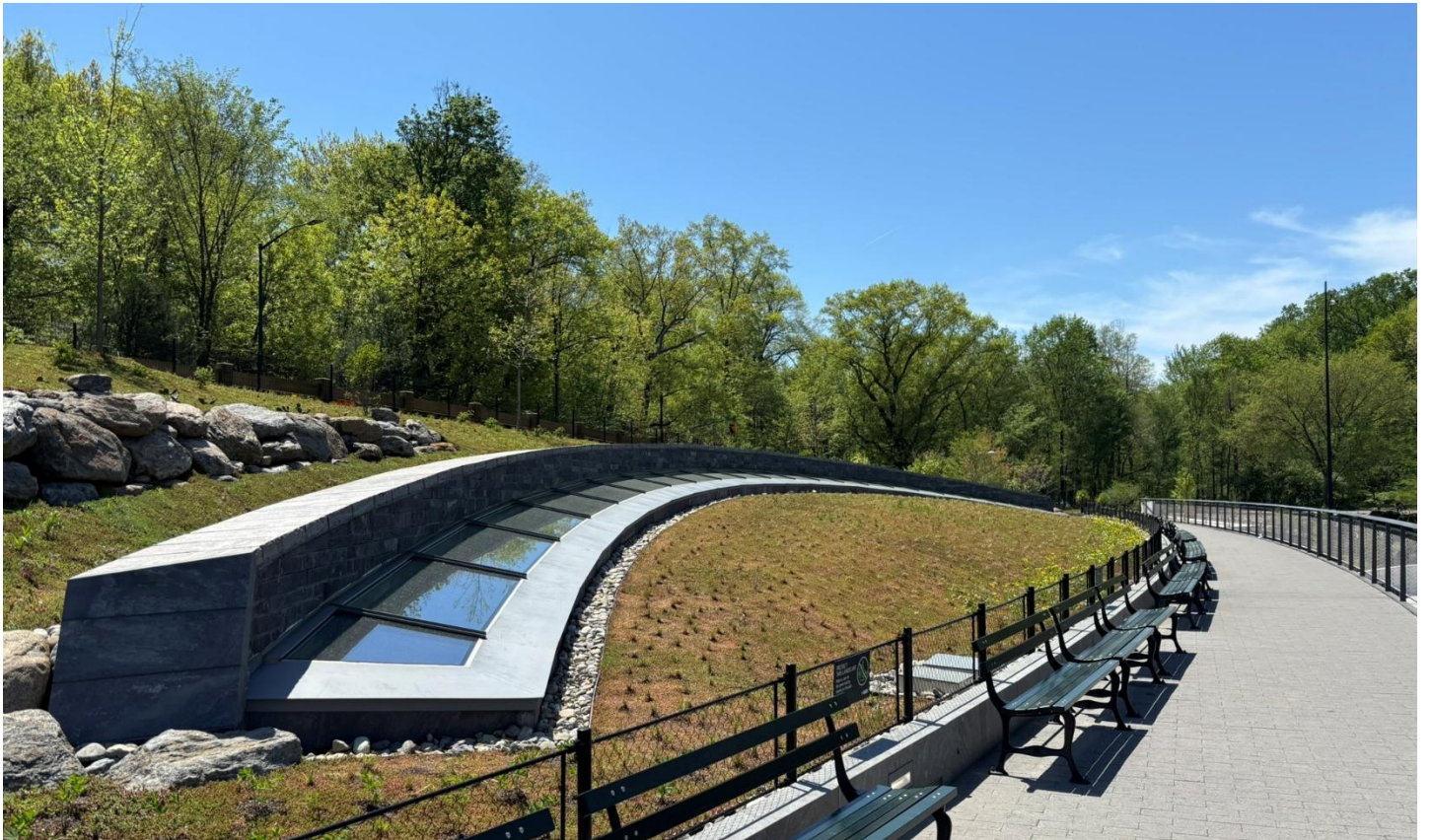
The hallway is decorated with photos telling the history of the park.



Equipped with conference rooms locker rooms, and plans to open a café in the future.



View from the roof top of the building



On the rooftop, benches are placed along the skylight.



Crossing the newly constructed bridge, you'll find yourself facing the Charles A. Dana Discovery Center—the symbolic heart of this area.