

## Thailand News

June 2025

### CONTENTS

- Project 1: Aman Nai Lert (Hotel, Bangkok, Thailand)

## 1. AMAN NAI LERT

### Project Overview

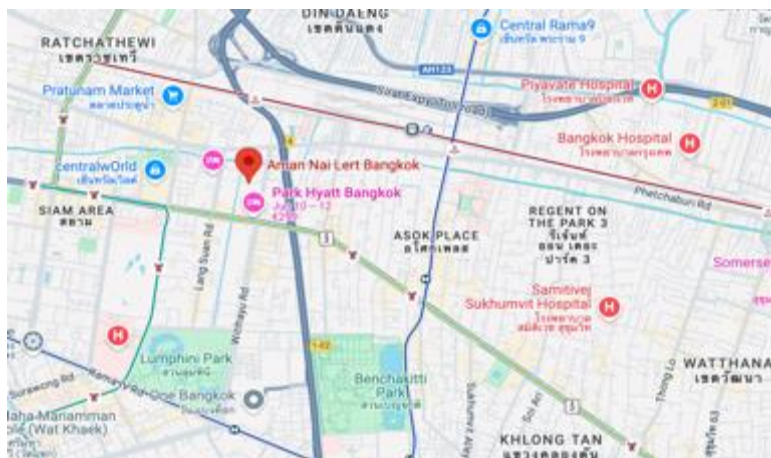
Opened on April 2, 2025, Aman Nai Lert Bangkok is a 36-storey luxury hotel and residence located within the historic Nai Lert Park in Bangkok's Pathumwan district. Formerly the Swissôtel Nai Lert Park, the property has been reimaged through a collaboration between Aman Resorts and the Nai Lert family, led by Aman CEO Vladislav Doronin and Naphaporn "Lek" Bodiratnangkura, great-granddaughter of business tycoon Nai Lert. Designed by renowned Belgian architect and interior designer Jean-Michel Gathy—known for his visionary work with Mandarin Oriental, Cheval Blanc, and Four Seasons—the building merges modern elegance with Thai heritage. It features 52 suites, 34 residences, a 1,500-sqm Aman Spa, and a variety of dining and social venues. The design draws inspiration from its surroundings, incorporating the nearby 1915 Nai Lert Park Heritage Home and preserving the site's serene, garden-like character.

Dining and social venues include the 1872 lounge bar and the Italian restaurant Arva. Wellness is central to the experience, anchored by a two-story Aman Spa & Wellness Centre offering hydrotherapy, personalized treatments, and a Hertitude Clinic medical facility. An infinity pool overlooking Nai Lert Park completes this urban sanctuary.

### Project Details

1. **Type of Business:** Luxury hotel
2. **Open Date:** 04/2025
3. **Location:** 1 Soi Somkid, Lumpini, Bangkok, Thailand
4. **Number of Rooms:** 52 hotel suites (starting from 94 sqm) and 34 branded residences
5. **Room Rate:** Starting at around USD 1,500 per night
6. **Interior Designer:** Jean-Michel Gathy, Denniston; [www.denniston.com.my](http://www.denniston.com.my)
7. **Developer:** Partnership between Aman Resorts and the Nai Lert family; <https://nailertgroup.com>
8. **Website:** [www.aman.com/hotels/aman-nai-lert-bangkok](http://www.aman.com/hotels/aman-nai-lert-bangkok)

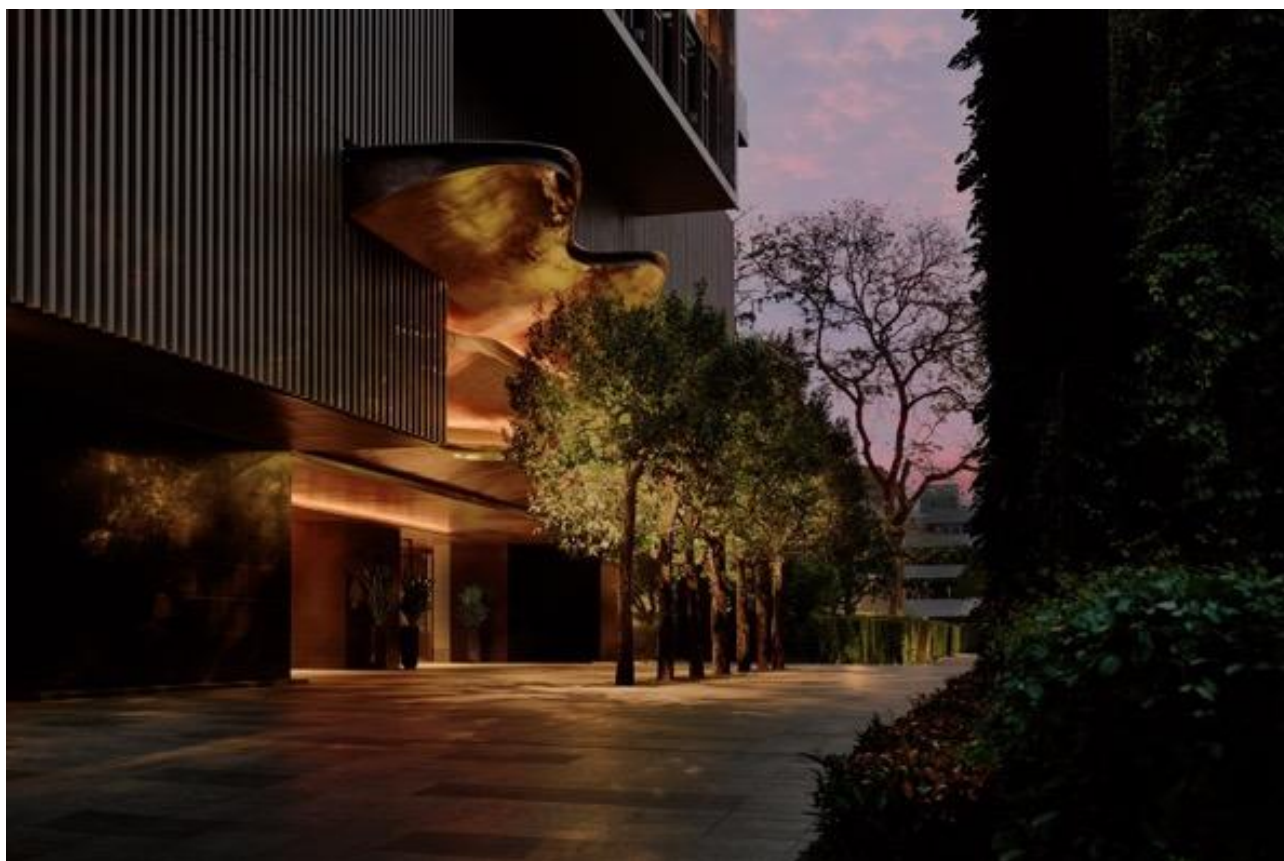
### Location map



The luxury hotel is situated within the lush 7-acre Nai Lert Park in the Pathumwan district of central Bangkok, within walking distance of both Ploenchit and Chidlom BTS skytrain stations.



The hotel stands on the former site of the Swissôtel Nai Lert Park and includes the Nai Lert Park Heritage Home, a historic house built in 1915 by Nai Lert, a well-known Thai businessman. The house remained in the family for generations before becoming a public heritage site in 2012.







Hotel reception.



The lobby features an installation of 3,000 spinning tops arranged in the shape of the Thai numeral one, a symbolic tribute to the legacy of Nai Lert.



Arrival lobby.



Gathy's signature style blends cultural heritage with contemporary sophistication. At Aman Nai Lert, this is also expressed through handcrafted local artworks and antiques.





One of the most striking design features is a 12-meter-tall brass tree sculpture in the atrium, echoing the park's iconic Chamchuri tree.



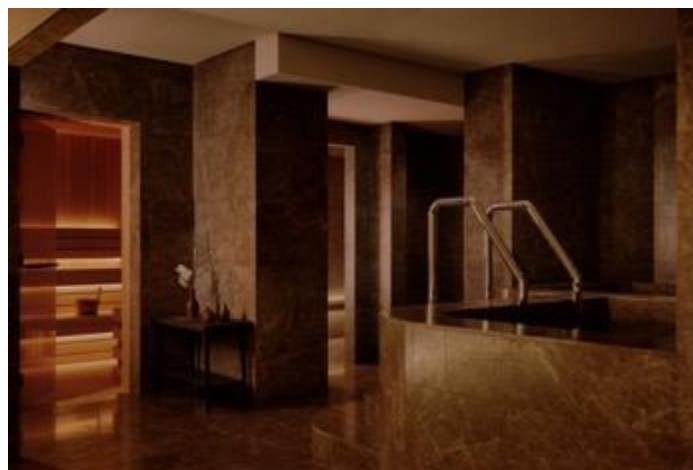
The atrium floor.



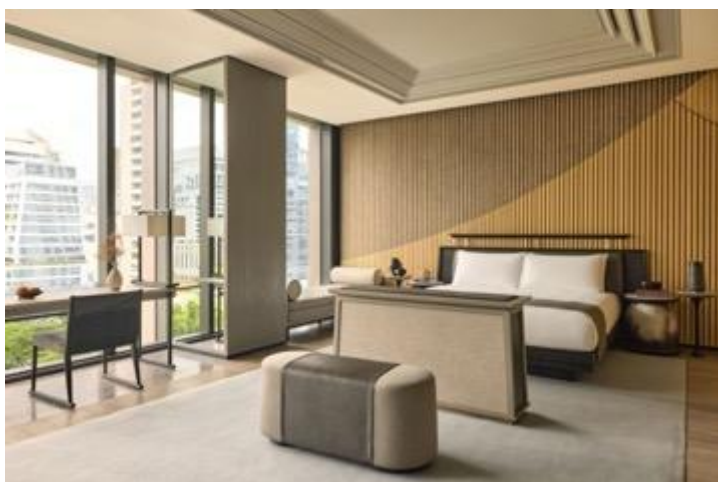
The Aman Suite spans a palatial 713 sqm and has three bedrooms, a private spa and a study.







Suites are understated and expansive, marked by natural materials, calming tones, and flexible layouts.



Aman Nai Lert Bangkok offers 52 of the city's largest suites, located on floors 11 to 18, with Deluxe Suites (94–98 sqm) overlooking the northern skyline and Premier Suites (94–99 sqm) facing Nai Lert Park to the south.