

Paris Report

July 2025

CONTENTS

- * Project 1: Le Jardin de Verre by Locke
- * Project 2: Hotel Sax Paris

1. Le Jardin de Verre by Locke

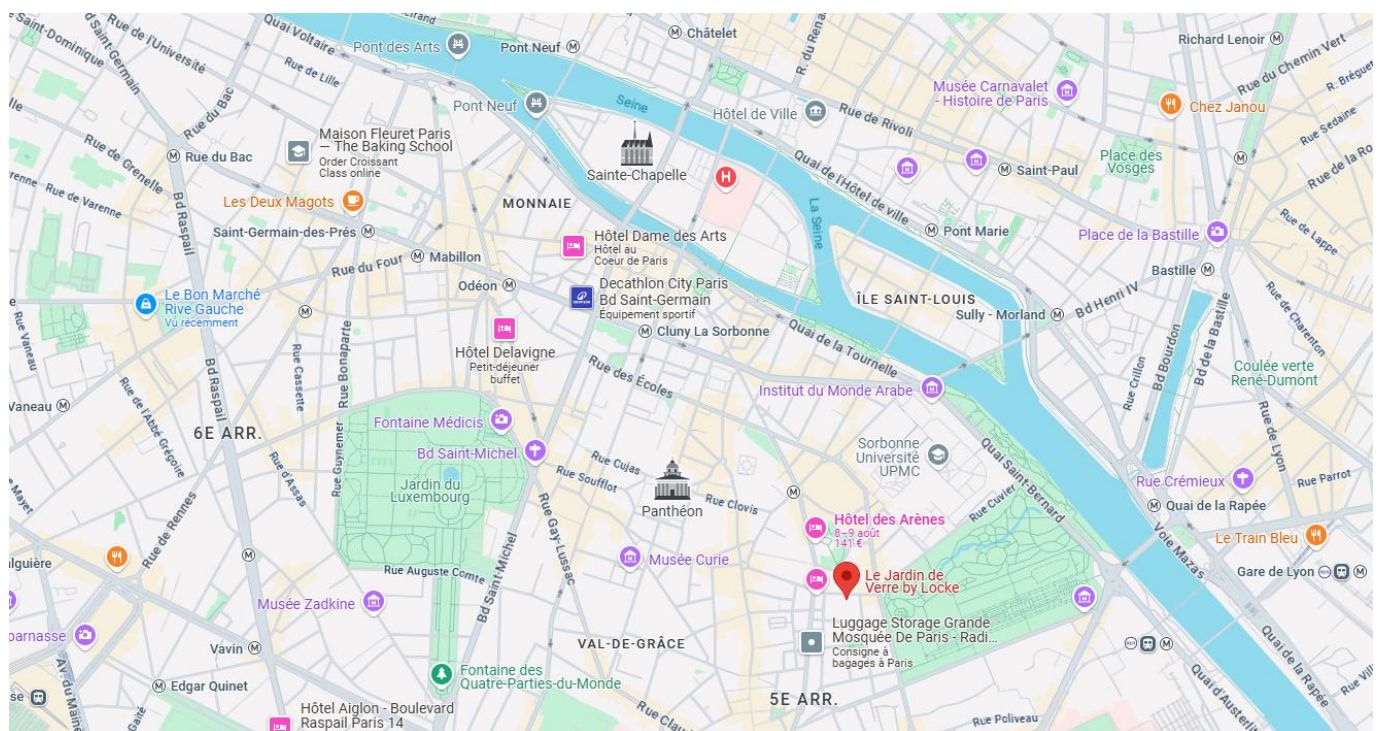
Project Overview

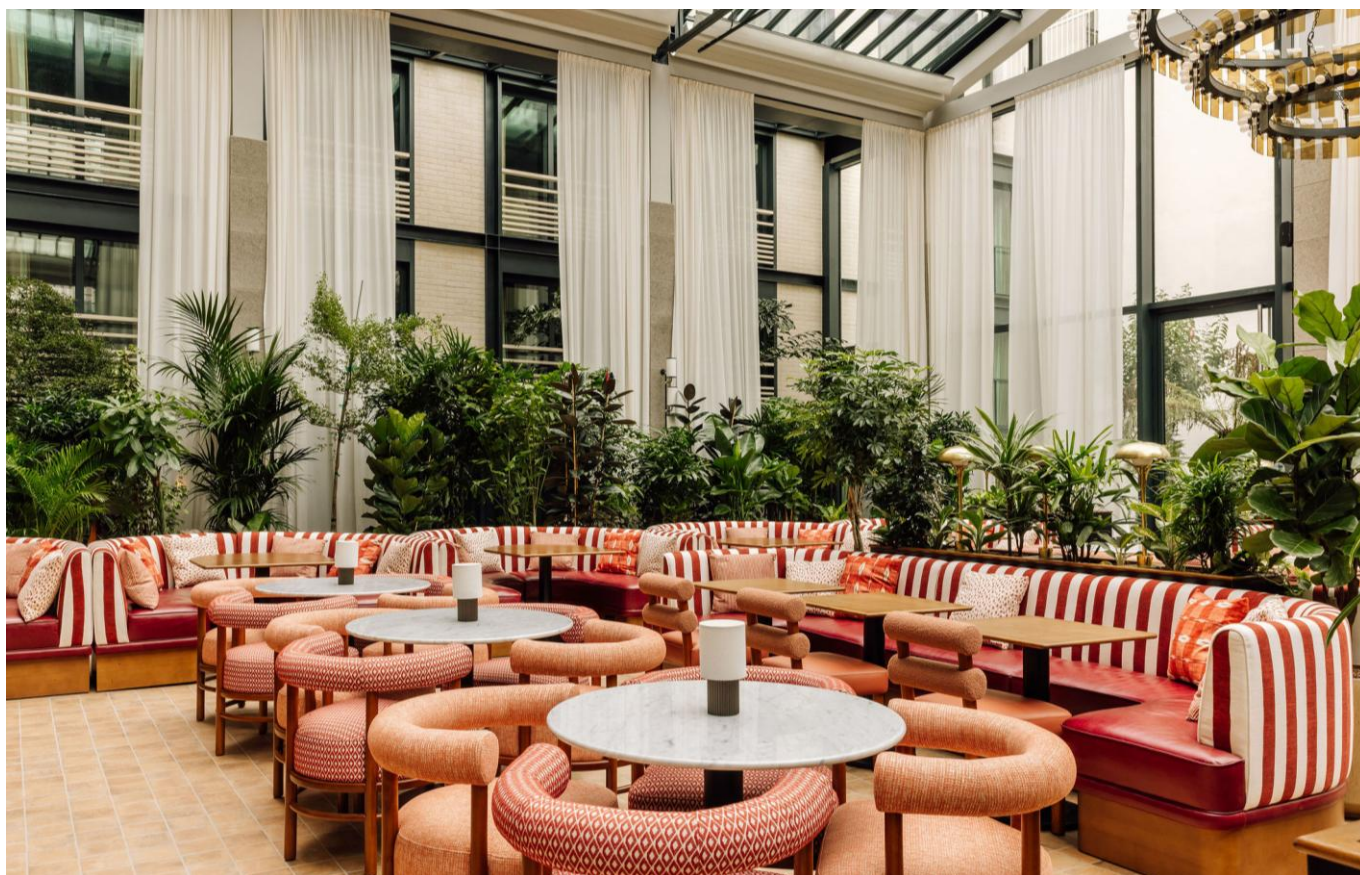
In February 2025, Le Jardin de Verre by Locke, an apartment hotel, opened in a corner of the Carceratan district, home to the Panthéon and Sorbonne University. Locke is a hotel brand operated by the London-based Edyn Group, offering a “live like you stay” experience. With a concept centered around sophisticated design, vibrant social spaces, community-driven programs, and innovative dining that celebrates local character, the brand has expanded throughout the UK and Europe, and now enters France with this, its 17th property. The hotel, a carefully renovated fusion of two 16th-century mansions and a 19th-century mill, features 145 design-led studios and suites, as well as a restaurant, fitness and yoga studios, a coffee stand and wine bar, and a multi-purpose space for events and workshops. Designed by Edyn’s in-house team, the rooms are warm and refined, blending Haussmannian elements such as oak flooring, tall windows, and intricate moldings with industrial features like stainless steel kitchens and bold textile patterns. The atrium restaurant, flooded with natural light from a high, glass-roofed ceiling, is lushly landscaped with greenery. The result is a one-of-a-kind hotel that embodies the harmony between Paris’s storied past and the natural world.

Project Details

1. Brand: Locke
2. Type of Business: Hotel, Restaurants
3. Open Date: 02/2025
4. Location: 7 Rue Lacépède, 75005 Paris France
5. Size: 145 rooms & suites

Location Map





Restaurant



Cocktail Bar



Coworking Space 1



Coworking Space 2



Guest Room 1



Guest Room 2

All Photos © Le Jardin de Verre by Locke

2. Hotel Sax Paris

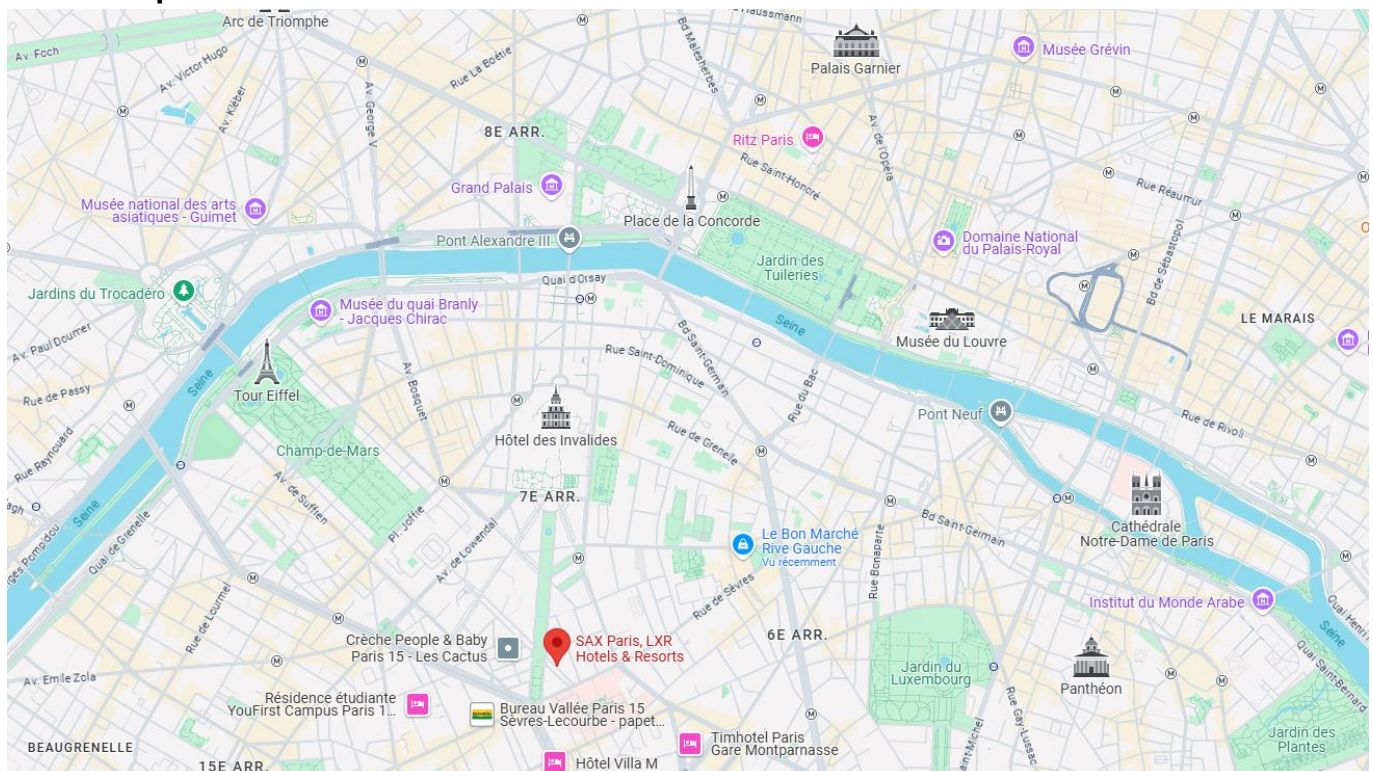
Project Overview

In April 2025, Hotel Sax Paris opened in the 7th arrondissement, one of the most exclusive residential areas in Paris, home to the Eiffel Tower and the Orsay Museum. The hotel is drawing attention as the first property in France under LXR Hotels & Resorts, Hilton's premier luxury brand. Developed by Compagnie de Phalsbourg, a leading French real estate firm, the 118-room hotel was created by renovating a historic neo-Gothic building originally constructed in 1899. In contrast to the classical stone façade, the interiors have been reimagined with a modern, luxurious design. Upon entering, guests are welcomed by the Galerie on the left—an elegant social space adorned with 200 mirrors and a Baccarat chandelier—while just beyond the reception lies a French-style garden terrace with a pool and Jacuzzi, designed by Studio Ravn. The 350-square-meter rooftop terrace overlooking the Eiffel Tower is home to Kinugawa, a refined Japanese restaurant born in Paris, and the basement spa and fitness club—open 24 hours a day to both hotel guests and locals—features state-of-the-art equipment. This newest upscale lifestyle hotel, where travelers and Parisians mingle, seamlessly blends high-end hospitality with art and multifunctional spaces for private events.

Project Details

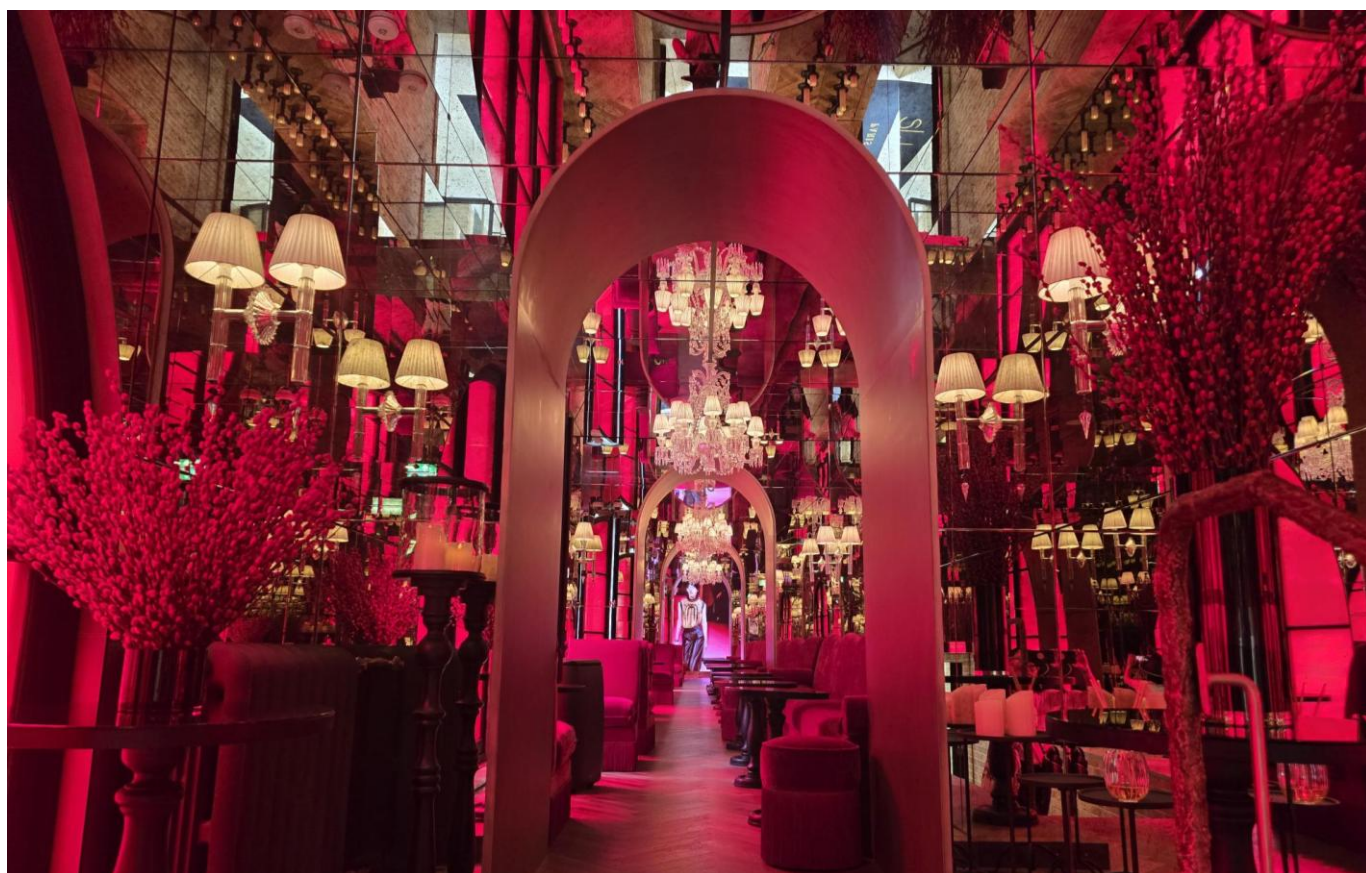
1. Brand: LXR Hotels & Resorts
2. Type of Business: Hotel, Restaurant
3. Open Date: 04/2025
4. Location: 55 Av. de Saxe, 75007 Paris France
5. Size: 118 rooms & suites

Location Map





Facade



Galerie



Arik Levy's sculpture "Rockstone" at the entrance of Garten Terrace



French Restaurant Le Sax