

# New York Report

## December, 2025

### CONTENTS

\* Project 1: Studio Museum in Harlem

## 1. Studio Museum in Harlem

### Project Overview

The Studio Museum in Harlem, a long-standing cultural hub located on 125th Street, the main thoroughfare of Harlem in northern Manhattan—reopened on November 15, 2025, following a major renovation. Founded in 1968, the museum has played a central role in celebrating African American art and culture. After a seven-year closure, it has been reborn with a renewed identity.

The redesign was led by Adjaye Associates, founded by Ghanaian British architect David Adjaye, in collaboration with Cooper Robertson. The approximately 82,000-square-foot (7,600 m<sup>2</sup>) building features a brownstone-inspired exterior that blends seamlessly into Harlem's historic streetscape, along with a soaring atrium filled with natural light. Large windows facing 125th Street extend the museum's presence into the neighborhood, reflecting the architects' vision of connecting the street to the interior.

Inside, the museum includes galleries for permanent collection, educational spaces, artist-in-residence studios, a rooftop terrace, a shop, and a café—forming a multifunctional public environment. More than a place to view art, it is designed as a space for everyday engagement with the local creative community.

The opening season features a retrospective of artist Tom Lloyd, along with exhibitions that reexamine the museum's collection. The on-site café, offering coffee from local roasters and Harlem-inspired sweets, is expected to become a popular place to unwind after a visit.

Bringing Harlem's history and culture into the present, the renewed museum is not merely an art institution but a vibrant cultural hub—reimagined as a center for a new era.

### Project Details

1. Studio Museum in Harlem
2. Museum
3. Open Date: November 15<sup>th</sup>, 2025
3. Location: 144 W 125th St, New York, NY 10027
4. Target Customer: All
6. Website: <https://www.studiomuseum.org/>

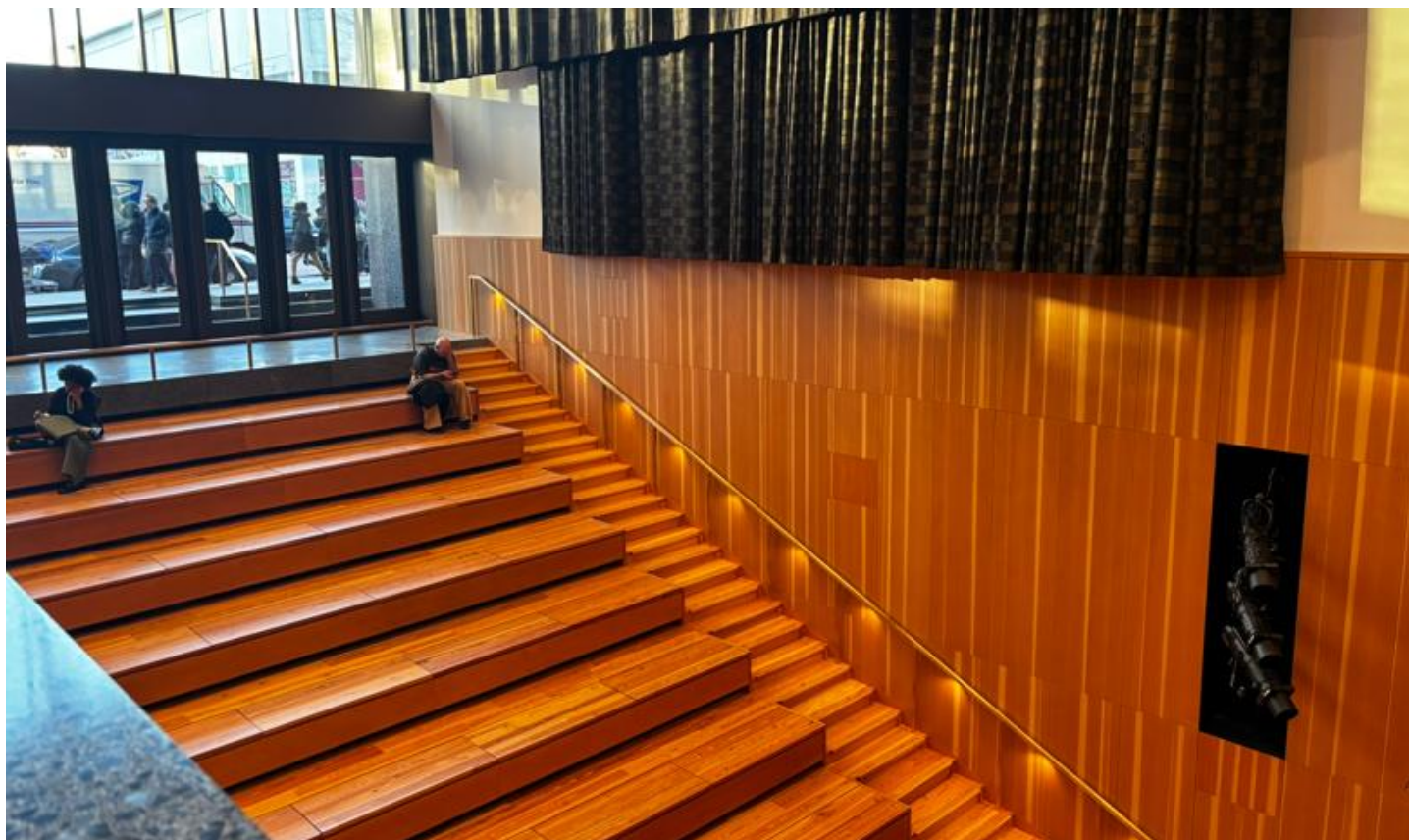
### Location Map



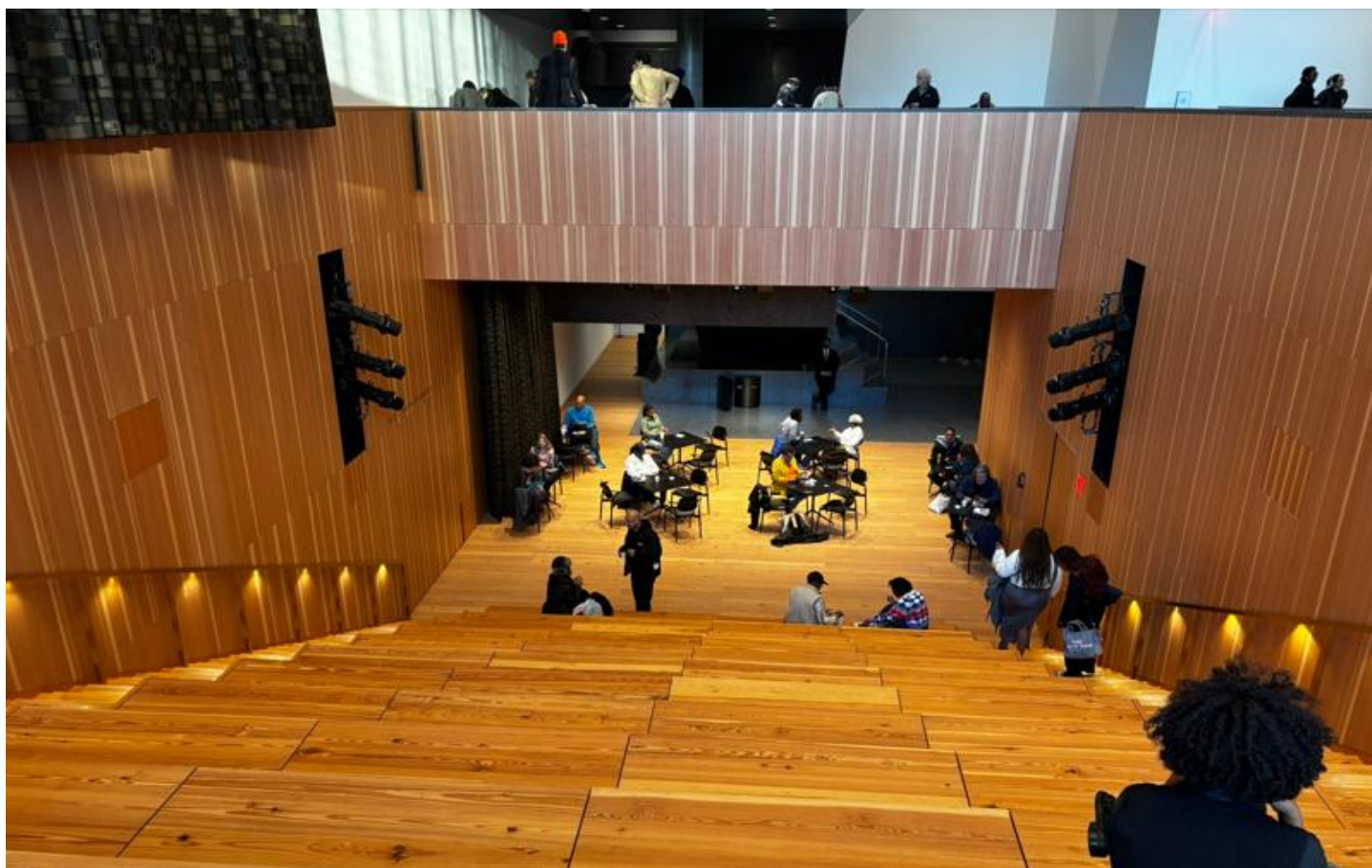


A chic exterior that blends seamlessly with the historic streetscape





A multi-purpose space featuring a bold atrium and stadium seating

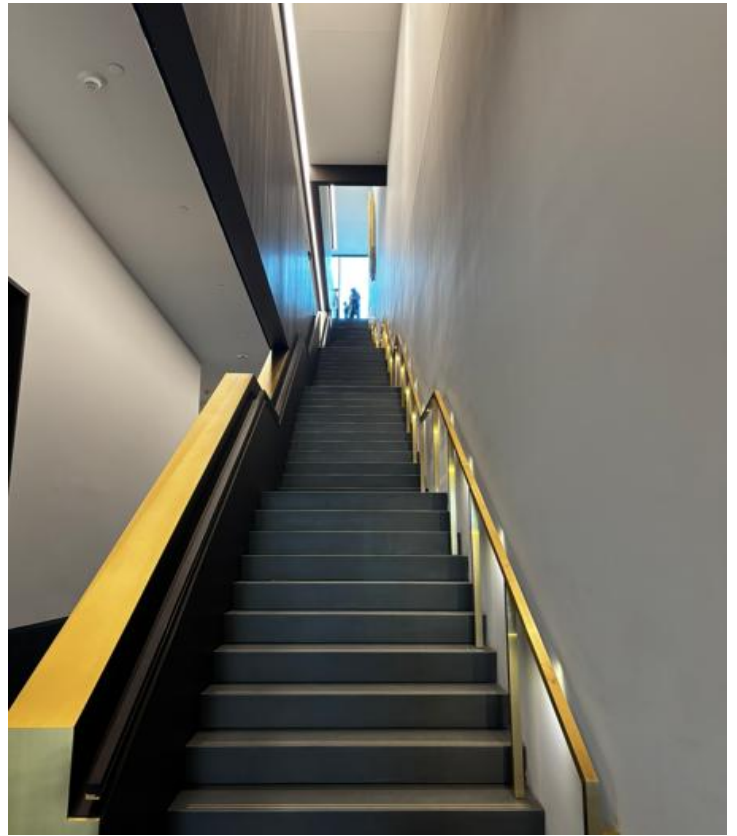
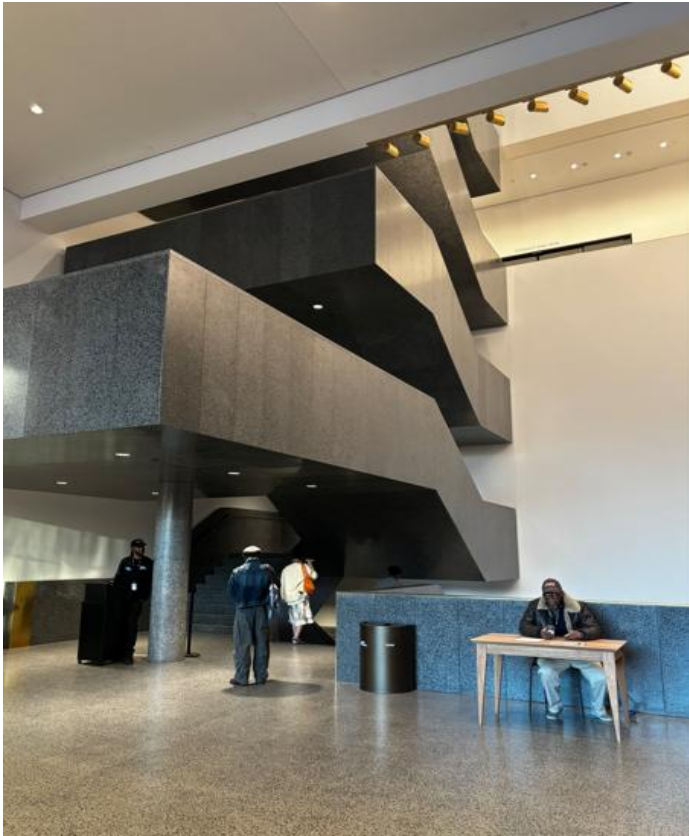


In the multi-purpose space, lectures and various events are also on the schedule

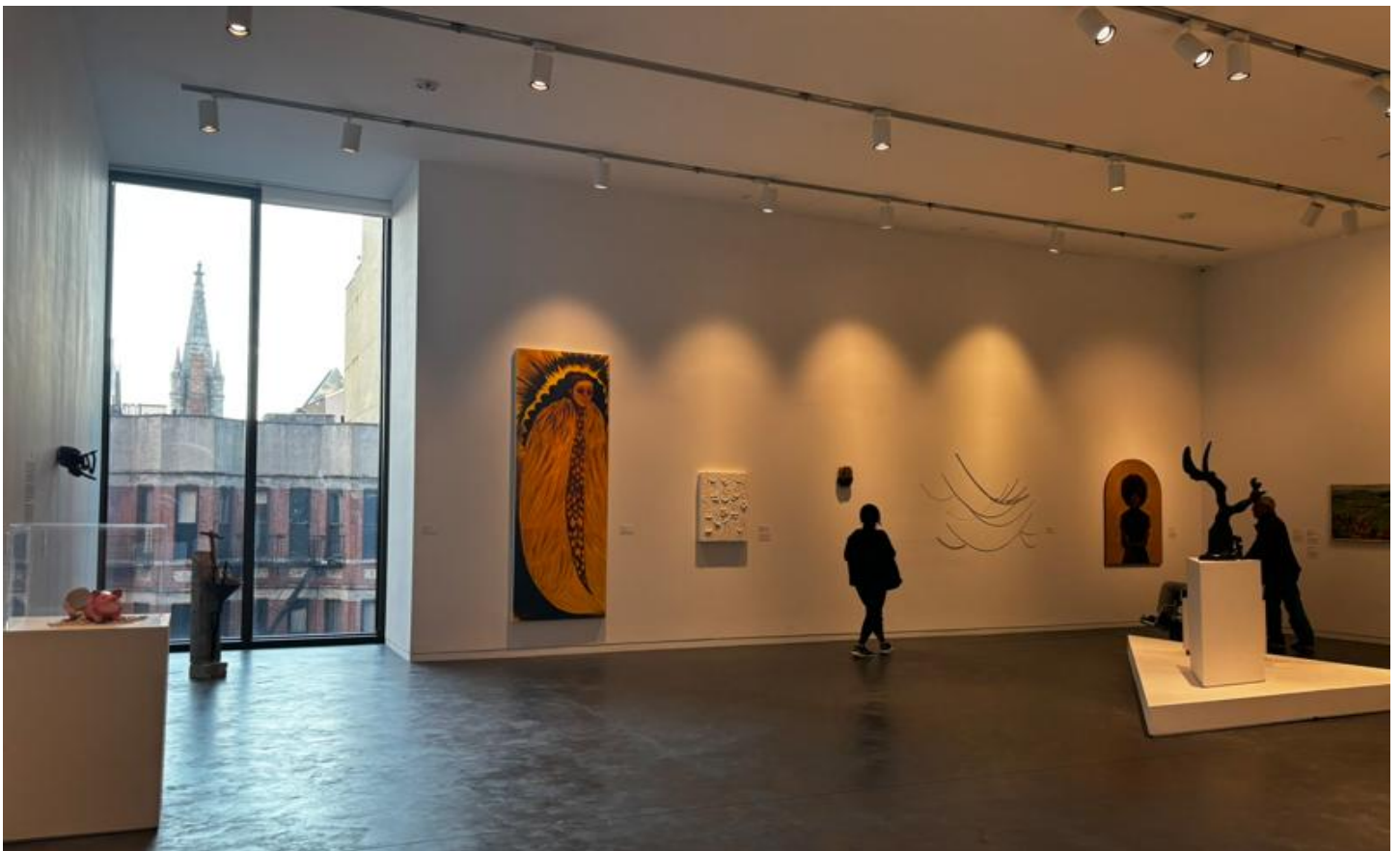


The staircase with its iconic design leads to the upper floor.





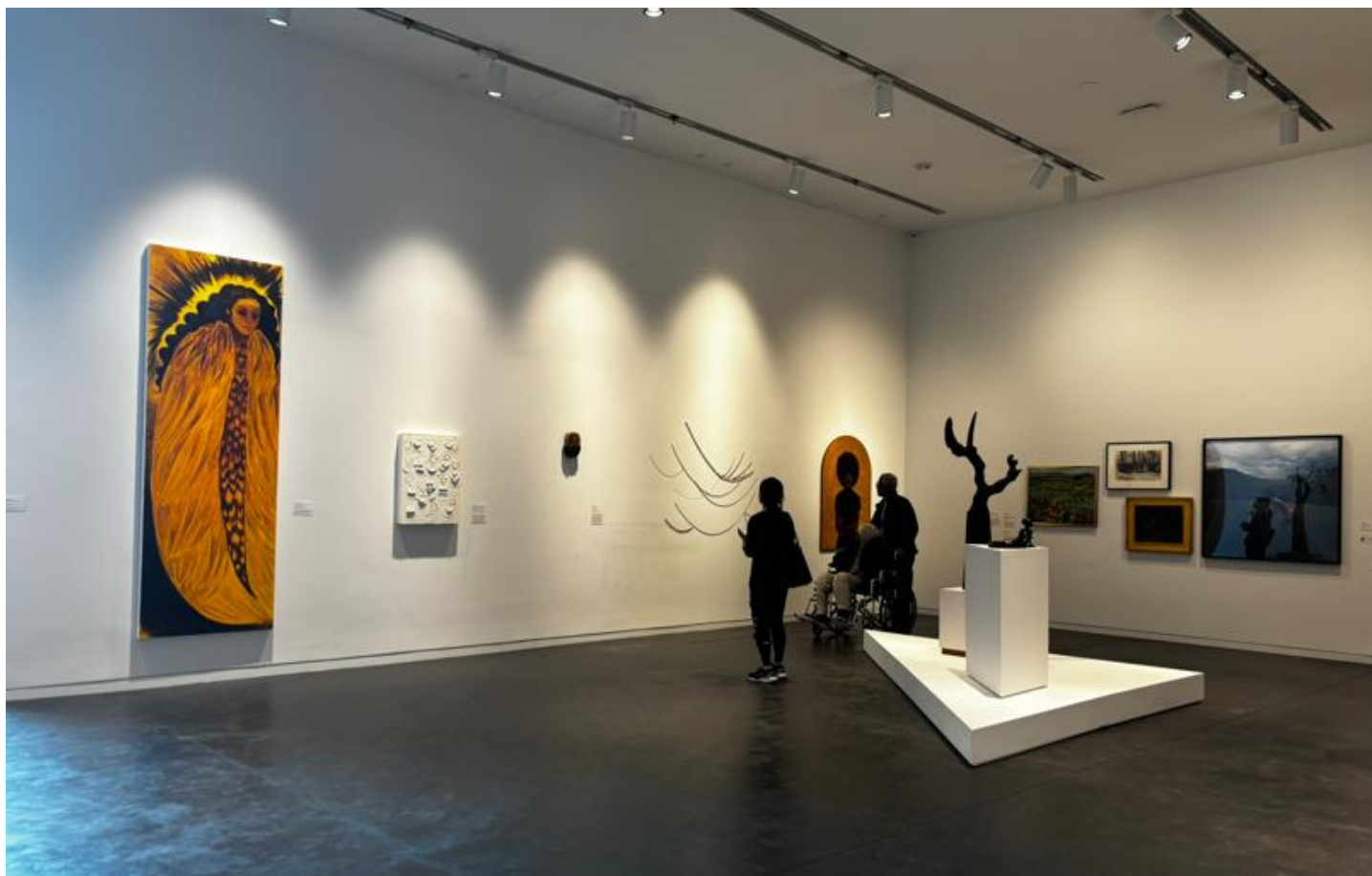
The simple, modern design stands out beautifully.



The windows are strategically positioned to frame views of the Harlem streetscape.



The newly curated exhibition of works from the collection is attracting attention.



A gallery space designed to take advantage of the high ceilings