

Paris Report

January 2026

CONTENTS

- * Project 1: Halle de l'Arsenal, Biltoki
- * Project 2: Câble C1

1. Halle de l'Arsenal, Biltoki

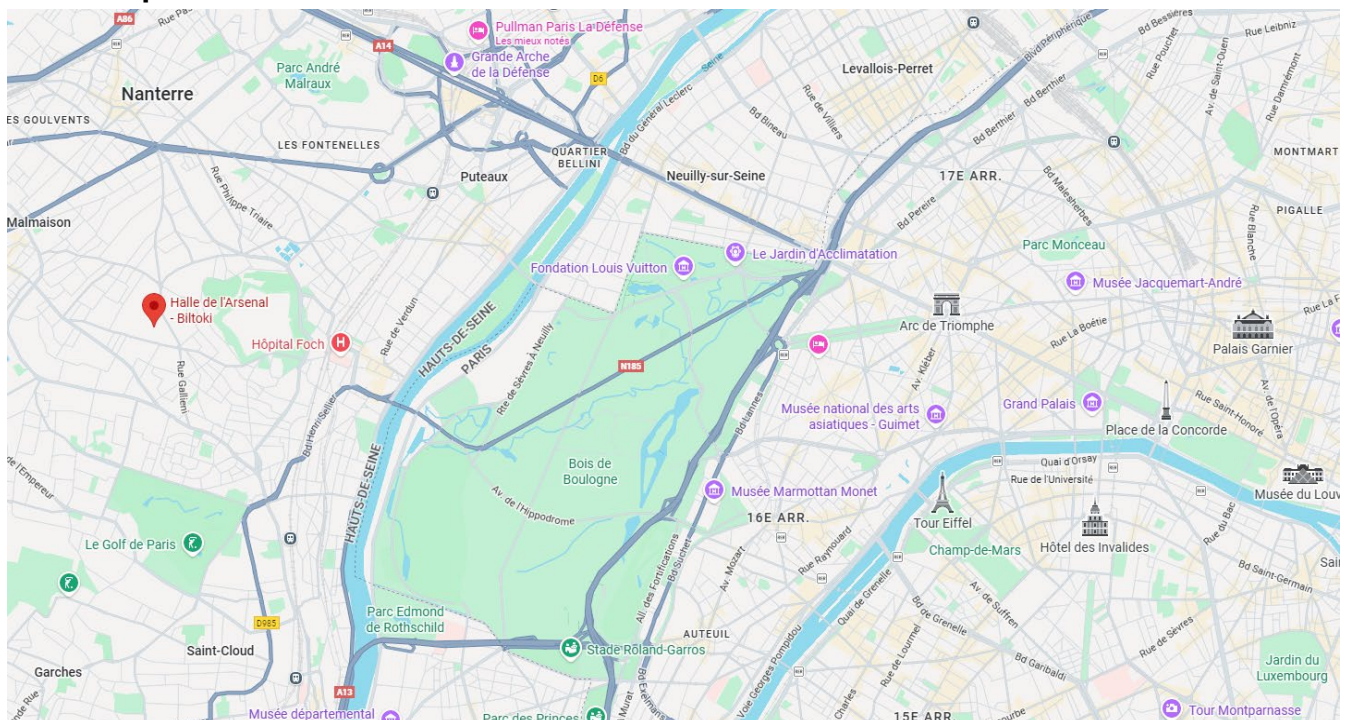
Project Overview

In December 2025, the food hall Halle de l'Arsenal, Biltoki opened in Rueil-Malmaison, west of Paris. Founded in 2009 in Anglet, southwestern France, Biltoki is a brand dedicated to creating “gathering places for food,” highlighting local ingredients and regional culinary culture through a network of gourmet food halls developed in collaboration with local businesses. Now operating in 10 regional cities, including Bordeaux and Rouen, this venue marks Biltoki's second location in the Paris metropolitan area, following its opening in Issy-les-Moulineaux in 2022. The Arsenal district, which functioned as a military and industrial zone from the 1960s, has been undergoing redevelopment since 2005 into an environmentally conscious neighborhood that integrates residential, commercial, and public spaces. A former NATO building, long preserved as a local landmark, has been carefully repurposed as Halle de l'Arsenal, Biltoki. Inside, the interior conveys a strong sense of openness through high ceilings and exposed truss structures. Concrete, steel, and polished flooring preserve the building's industrial character while introducing a subtle warmth. Line Renaud Square in front of the building features newly opened shops, including the elevated panoramic restaurant Monsieur Claude. With the opening of Metro Line 15 scheduled for 2030, the area is expected to continue its growth.

Project Details

1. Brand: Biltoki
2. Type of Business: Food court
3. Open Date: 12/2025
4. Location: 1 place Line Renaud, 92500 Rueil Malmaison France
5. Size: 3200m2

Location Map

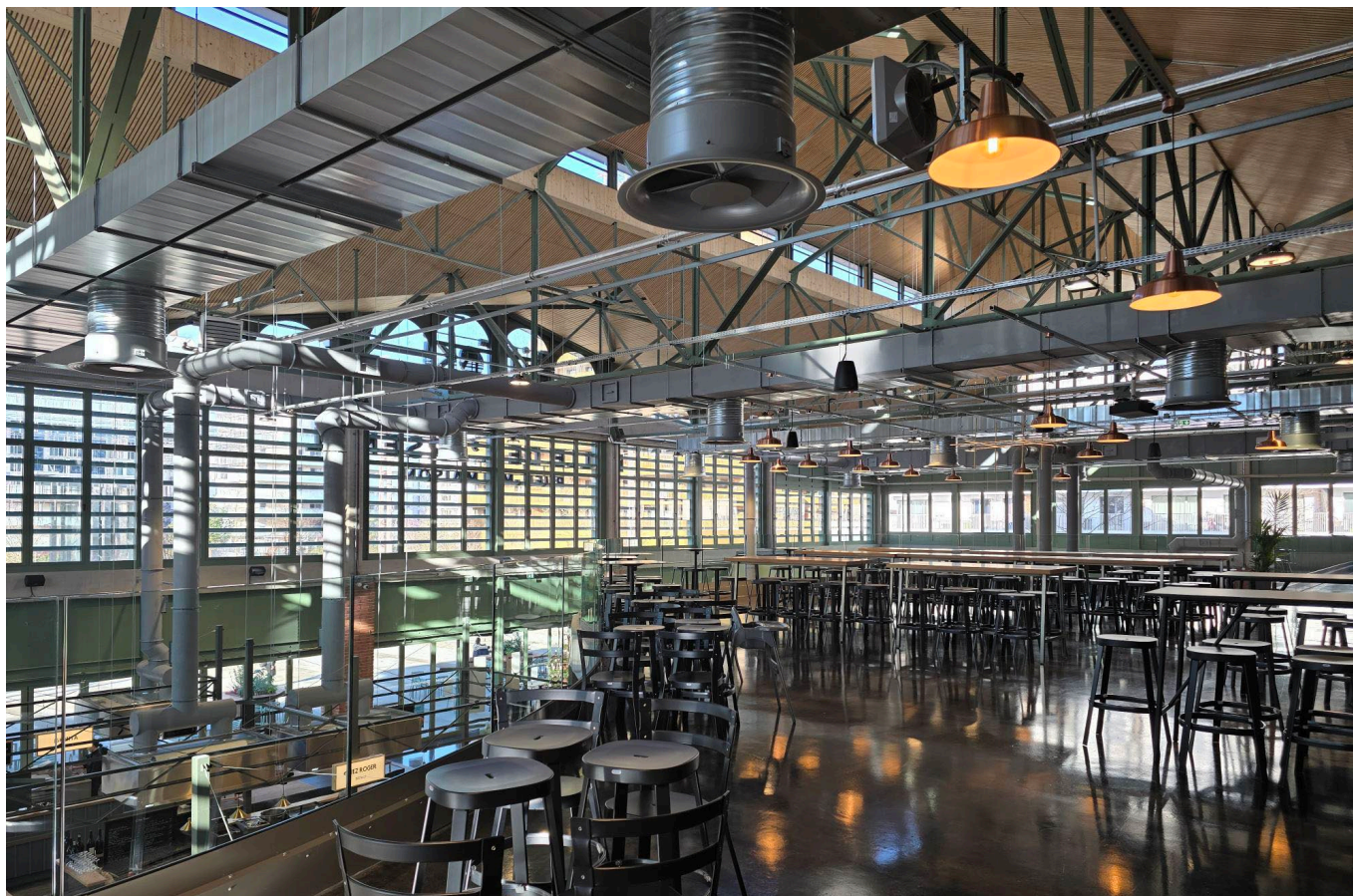




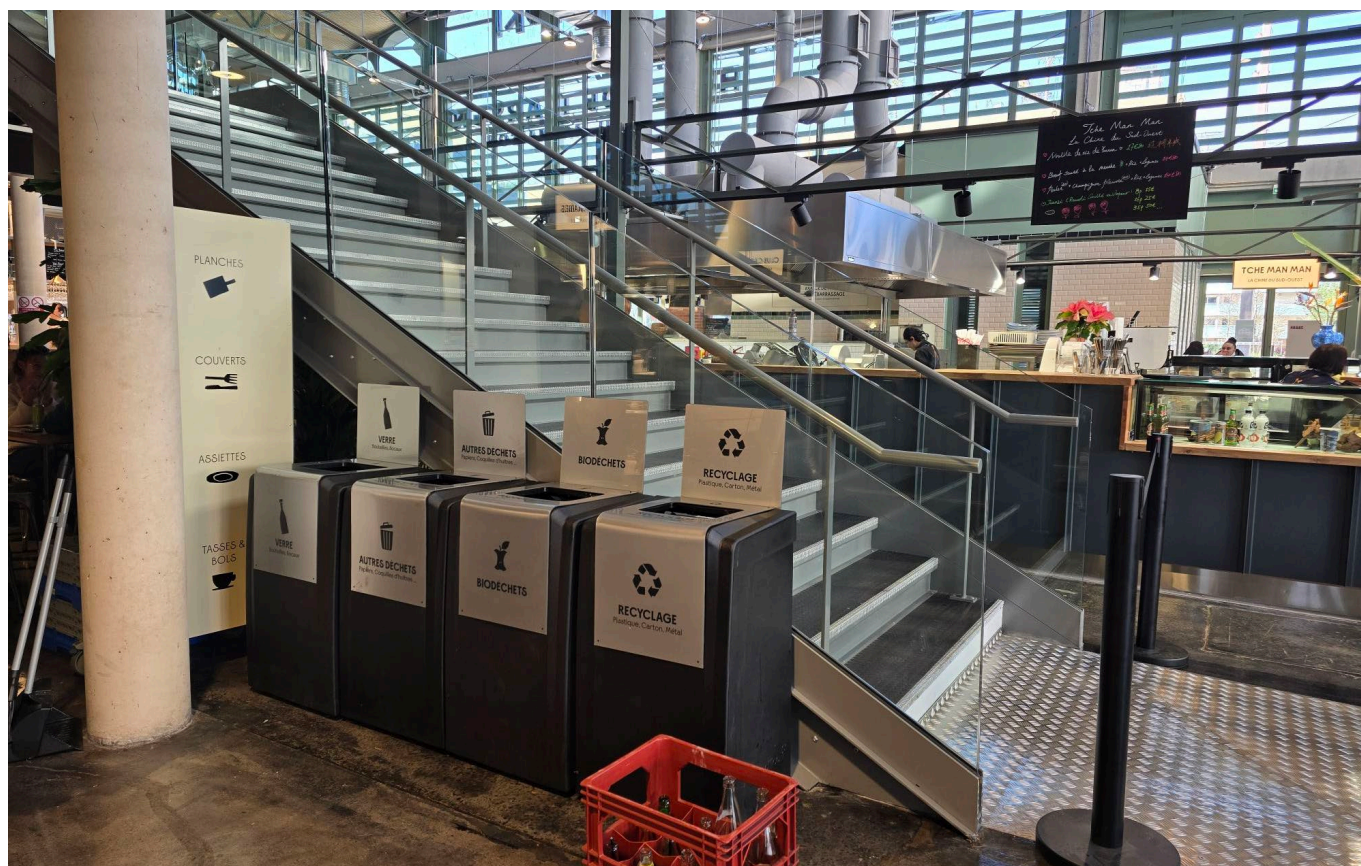
Facade



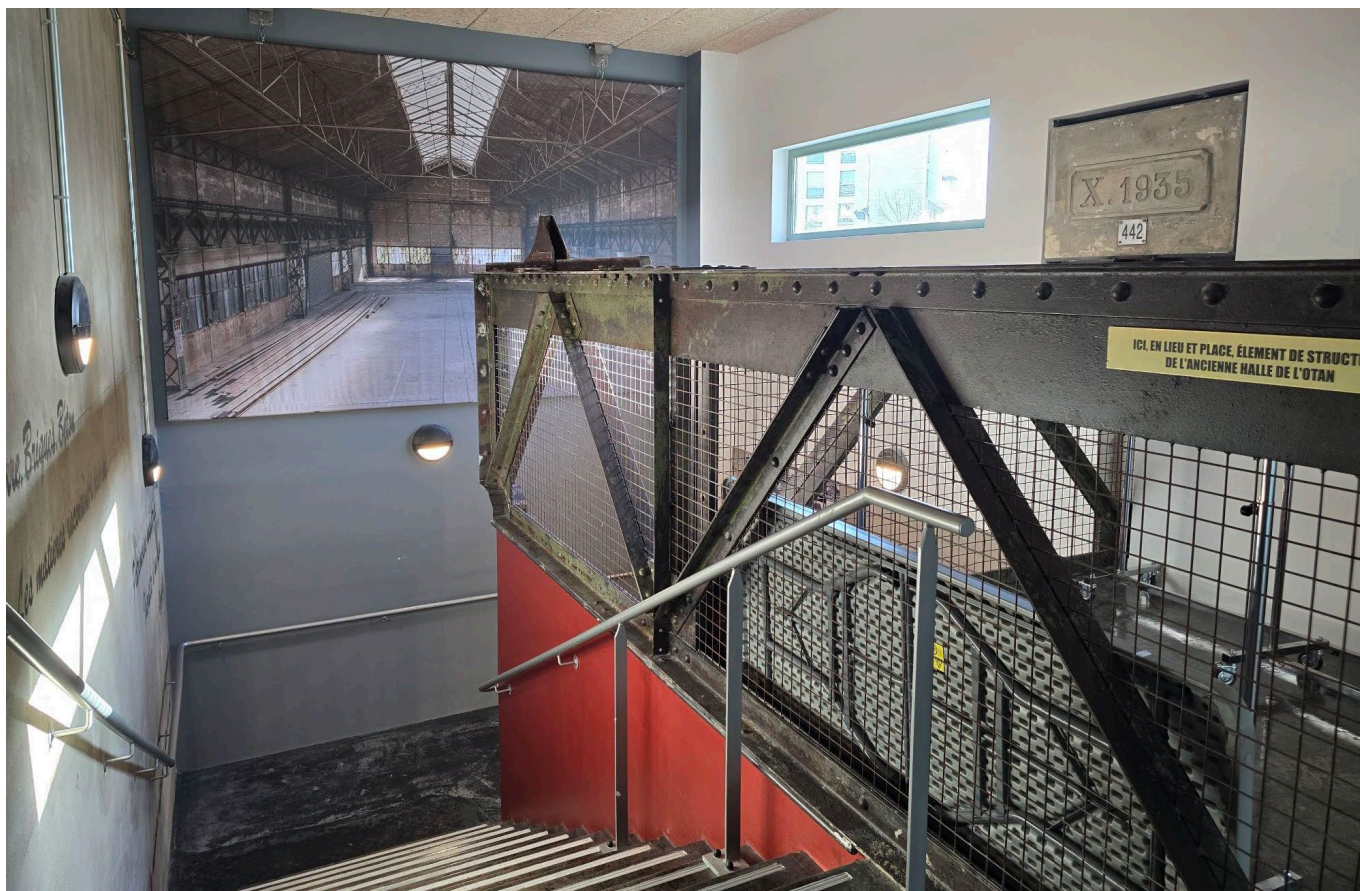
Inside the building 1



Inside the building 2



Inside the building 3



Inside the building 4



Line Renaud Square and the elevated panoramic restaurant, Monsieur Claude

2. Câble C1

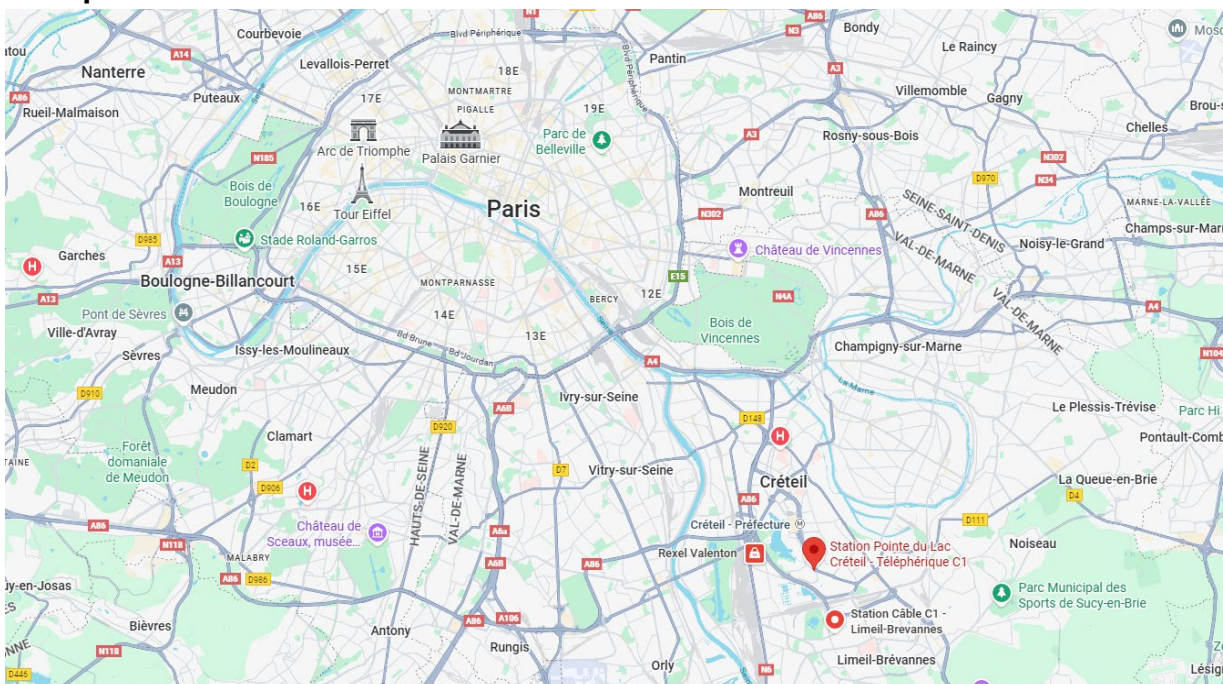
Project Overview

In December 2025, Câble C1—the first urban cable car system in the Île-de-France region near Paris—opened. Spanning approximately 4.5 kilometers with five stations, it connects Créteil and Villeneuve-Saint-Georges in the southeastern suburbs of Paris. The project has drawn attention as a symbolic example of new possibilities for urban mobility, dramatically improving connections between areas previously dependent on buses and private cars. The system responds to urban fragmentation caused by highways and freight rail lines. In locations where extending subways or tramways proved difficult, a cable car—capable of crossing existing infrastructure directly—was selected as a practical, low-impact solution. Architecturally, the number of support towers was minimized, and their placement carefully considered to reduce environmental impact. The design adopts a neutral, understated expression that conveys only essential functions while blending into the surrounding urban landscape. Each station is conceived as a lightweight structure tailored to its specific local context. Extensive use of glass creates visual permeability, reinforcing the openness expected of public architecture, while mechanical equipment unique to the cable car system is discreetly integrated to limit its visual presence. More than a transportation system, Câble C1 invites a rethinking of the relationship between architecture and the city. Its single line drawn through the air overcomes urban divisions, suggesting a lighter, more connective approach to urban design.

Project Details

1. Brand: Câble C1, Île-de-France Mobilités
2. Type of Business: Urban transport infrastructure
3. Open Date: 12/2025
4. Location: Créteil-Villeneuve-Saint-Georges France
5. Size: 4.5Km

Location Map





Lac Créteil Station 1



Lac Créteil Station 2



Lac Créteil Station 3



Câble C1