

Thailand News

February 2026

CONTENTS

- Project 1: Dib Bangkok (Museum, Thailand)

1. DIB BANGKOK

Project Overview

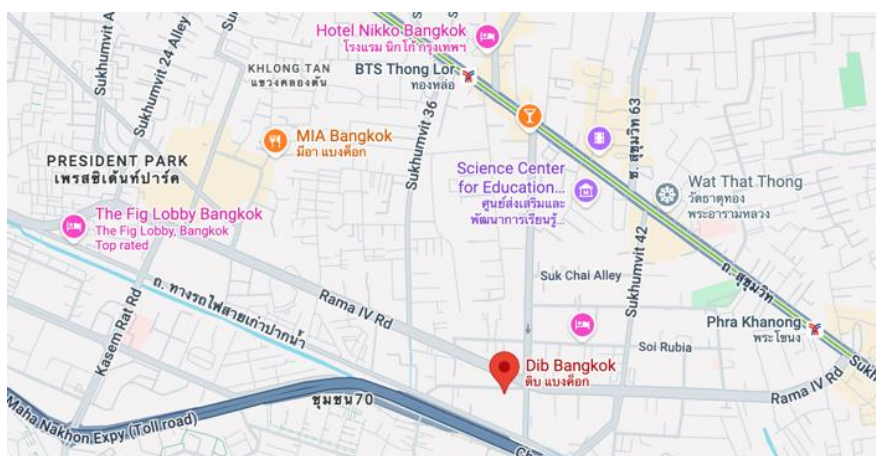
Dib Bangkok is Thailand's first museum dedicated to international contemporary art. Opened in December 2025, the museum is housed in a converted three-storey warehouse dating from the 1980s. It was conceived by the late Petch Osathanugrah, a prominent Thai businessman and art collector from the Osathanugrah family, part of the Osotspa consumer goods group, one of Thailand's leading fast-moving consumer goods companies. The project was developed by his son Purat Osathanugrah, who serves as founding chairman. Built around a private collection of global contemporary art, the museum presents rotating exhibitions alongside a permanent display. More than 1,000 works by over 200 artists are shown across painting, sculpture, photography, large scale installations and new media, dating from the 1960s to the present. Artists include Montien Boonma, Lee Bul, Anselm Kiefer, and Alicja Kwade.

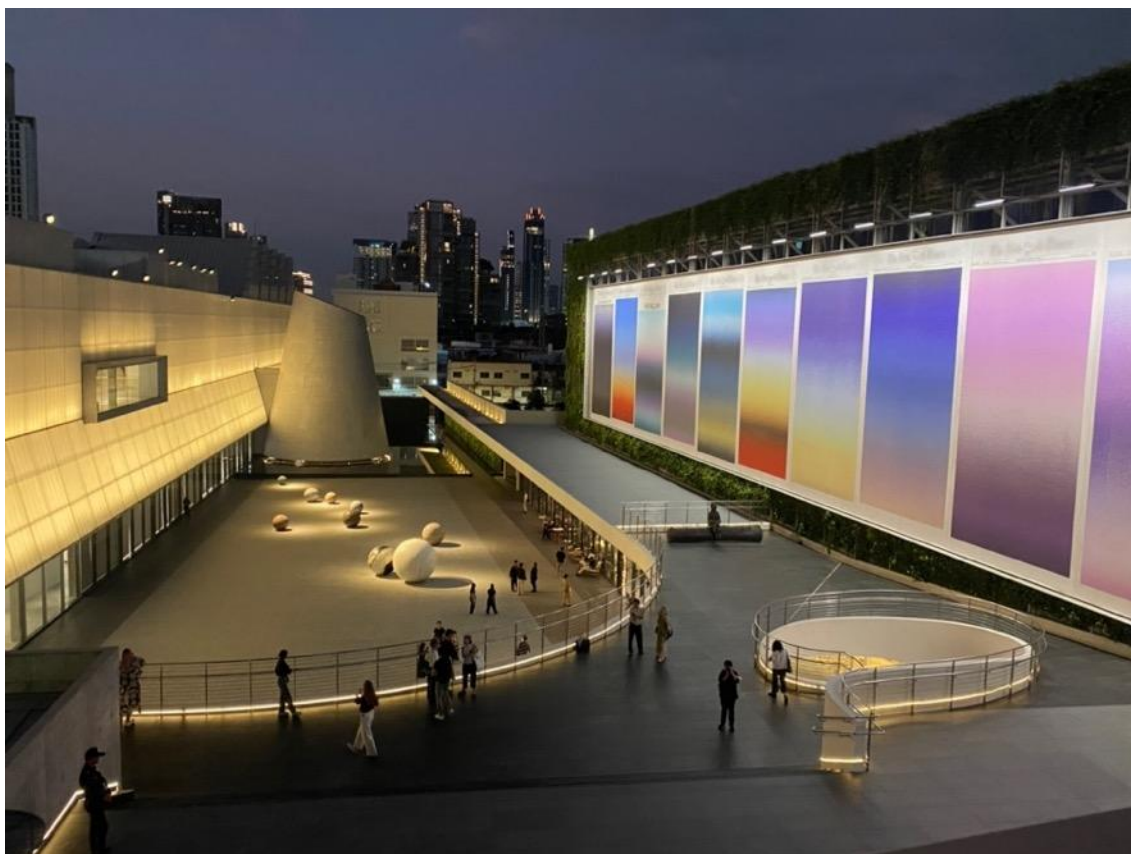
Designed by WHY Architecture, which was founded by Thai-born architect Kulapat Yantrasast, the project retains the building's industrial character while introducing varied gallery spaces. The ground floor features exposed concrete, the second floor has a quieter atmosphere with original Thai Chinese window grilles, and the top floor is composed of white cube galleries lit by north-facing sawtooth skylights. A key feature is the Chapel, a cone-shaped gallery finished in porcelain mosaic tiles, along with a reflection pool and a courtyard linking the museum to a bistro and flexible program space.

Project Details

1. **Type of Business:** Contemporary art museum
2. **Open Date:** 12/12/2025
3. **Location:** Near the corner of Sukhumvit Soi 40 and Rama IV Road, Bangkok, Thailand
4. **Size:** 7,000 square meters
5. **Architect:** WHY Architecture (USA); <https://why-site.com>
6. **Local Architect:** Architects 49 (Thailand), www.a49.com
7. **Developer:** Purat (Chang) Osathanugrah
8. **Website:** www.dibbangkok.org

Location map





Dib Bangkok features 11 gallery spaces totaling 7,000 square meters, a 1,400 square meter central courtyard, an outdoor sculpture garden, and a penthouse space for special events.





Dib Bangkok is Thailand's first major museum dedicated to international contemporary art.



Alicja Kwade's *Pars pro Toto* (2020), an installation of 11 monumental stone globes ranging from 70 to 250 cm in diameter, uses their different sizes to reflect on planetary systems and the physical nature of materials.



The Chapel, a distinctive cone-shaped gallery with a mosaic-tiled exterior and a skylight, sits within a water feature.



The ground floor has an austere, concrete aesthetic, preserving the building's industrial origin.



The museum is situated in a renovated 1980s warehouse.

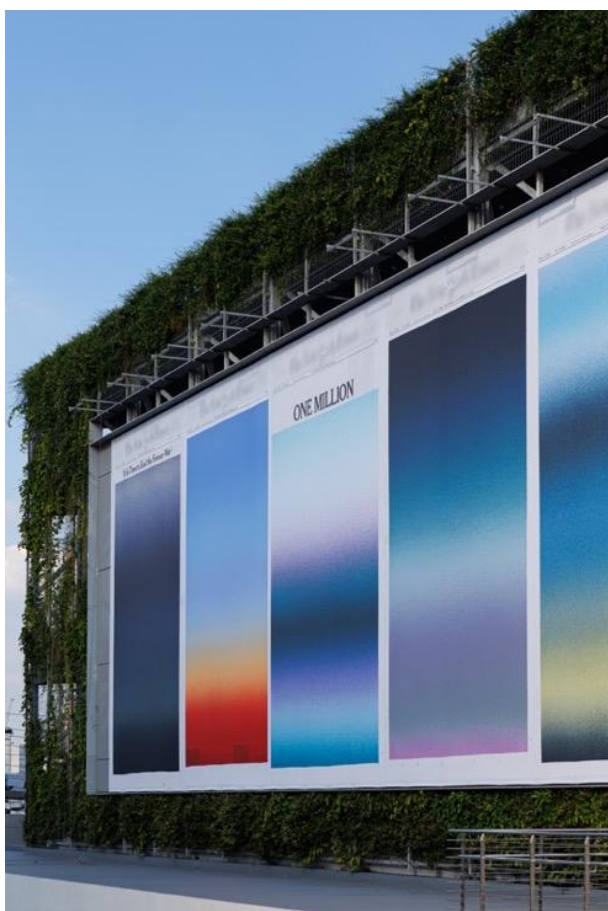


A reflection pool and a courtyard link the museum to a bistro and flexible program space.

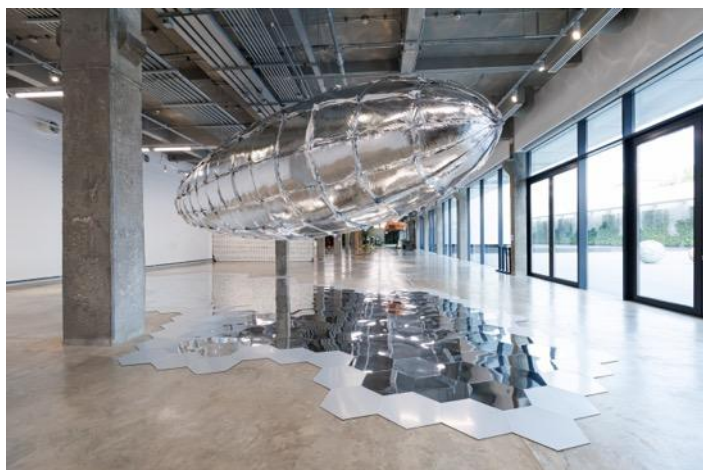




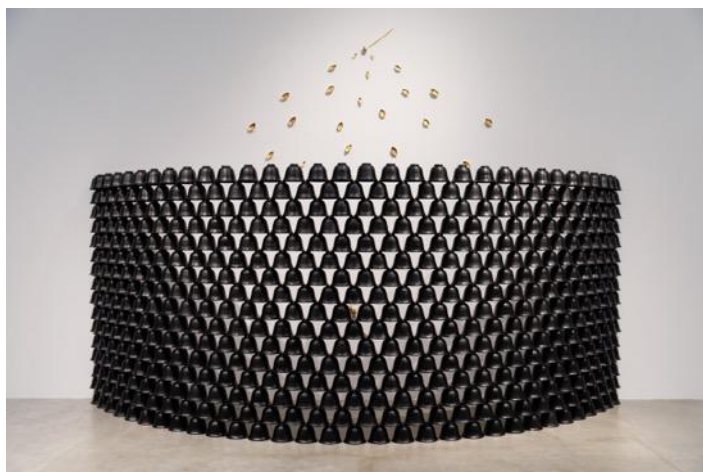
At the grand opening of Dib Bangkok *Memory*, a new large-scale work by Japanese artist Sho Shibuya was unveiled. Measuring 85 by 25 meters, it is the largest piece he has shown there and was created specifically for the space.



Bumpman on a Tree Trunk by German contemporary artist Paloma Varga Weisz.



The inaugural exhibition, *(In)visible Presence*, features works by 40 leading artists such as Montien Boonma, Lee Bul, Anselm Kiefer, and Alicja Kwade.



Montien Boonma's artwork *Lotus Sound*.



Montien Boonma's installation *Zodiac Houses*.

